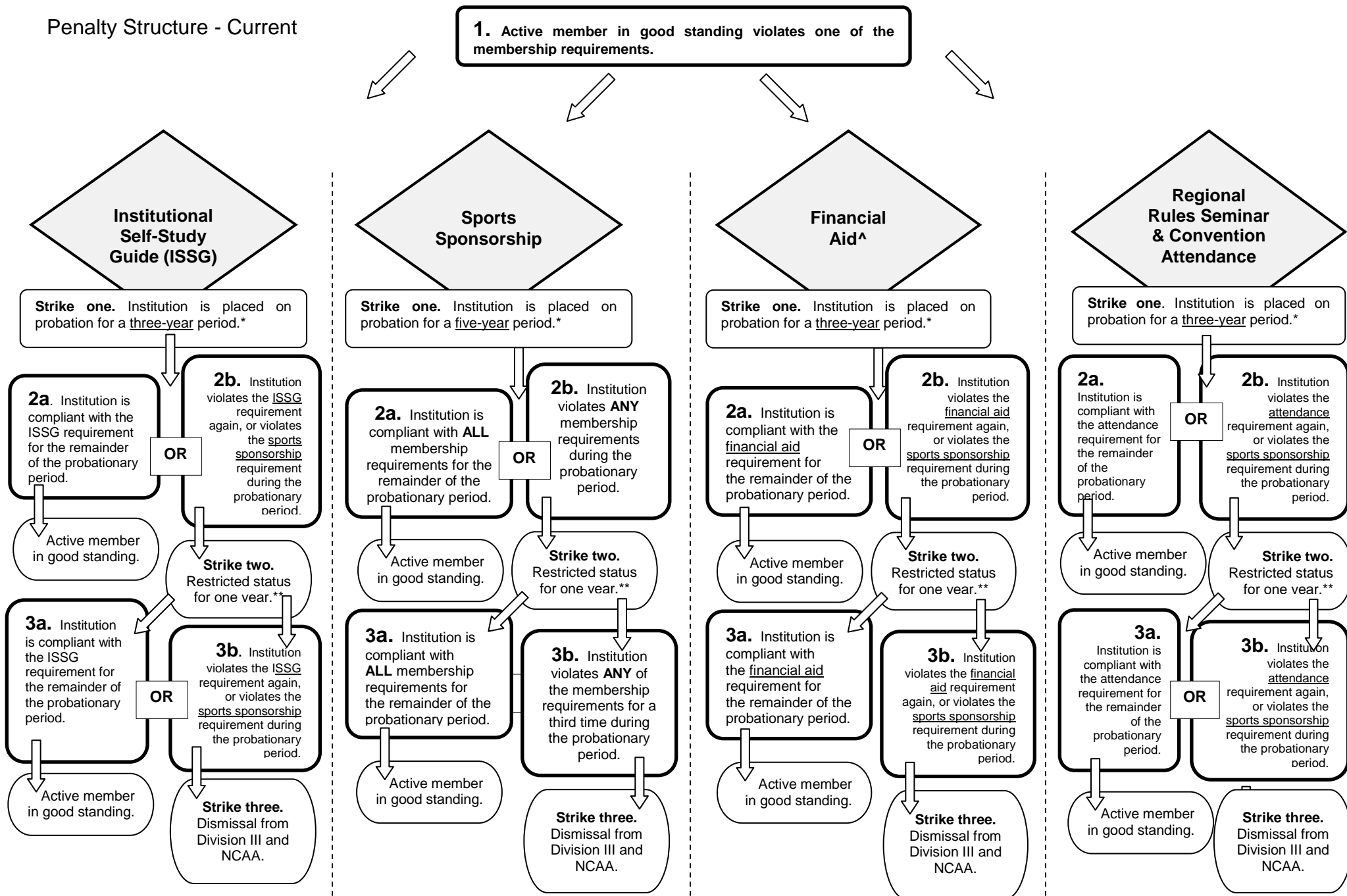


Penalty Structure - Current



*Subsequent violations may extend the penalty time period.

**Any membership requirement violation that occurs subsequent to a sports sponsorship violation results in both a strike for the requirement violation as well as a strike in the sports sponsorship penalty track.

^Financial aid bylaw dictate an institution is ineligible for championships until it submits its Financial Aid Report. The institution is not deemed to have failed this requirement until the conclusion of the academic year.

Penalty Structure – Probationary Period

An additional violation within the **same** silo does **not** add additional time to the probationary period. An additional violation from a **different** silo adds additional time to the probationary period. The additional time runs concurrently to the original probationary period.

