

Attendance and Sites

Attendance History	104
Attendance Records.....	105
All-Time Site and Arena History.....	106
Tournament Game Arenas By Site	107
Future Dates and Sites	114





Photo by Rich Clarkson

Twenty-five years ago, UNLV's Reggie Theus towered over North Carolina's Phil Ford in the semifinal game at the Omni during the first Final Four held in Atlanta in 1977, a one-point Tar Heels win.

Attendance History

By Tournament

Year	Final Date	Final Crowd	*Total Atten.	Sess.	Avg. Atten.	Final Site	Final Facility	No. of Teams
1939	3-27	5,500	15,025	5	3,005	Evanston, IL	Patten Gymnasium	8
1940	3-30	10,000	36,880	5	7,376	Kansas City, MO	Municipal Auditorium	8
1941	3-29	7,219	48,055	5	9,611	Kansas City, MO	Municipal Auditorium	8
1942	3-28	6,500	24,372	5	4,874	Kansas City, MO	Municipal Auditorium	8
1943	3-30	13,300	56,876	5	11,375	New York	Madison Square Garden	8
1944	3-28	15,000	59,369	5	11,874	New York	Madison Square Garden	8
1945	3-27	18,035	67,780	5	13,556	New York	Madison Square Garden	8
1946	3-26	18,479	73,116	5	14,623	New York	Madison Square Garden	8
1947	3-25	18,445	72,959	5	14,592	New York	Madison Square Garden	8
1948	3-23	16,174	72,523	5	14,505	New York	Madison Square Garden	8
1949	3-26	10,600	66,077	5	13,215	Seattle	Edmundson Pavilion	8
1950	3-28	18,142	75,464	5	15,093	New York	Madison Square Garden	8
1951	3-27	15,348	110,645	9	12,294	Minneapolis	Williams Arena	16
1952	3-26	10,700	115,712	10	11,571	Seattle	Edmundson Pavilion	16
1953	3-18	10,500	127,149	14	9,082	Kansas City, MO	Municipal Auditorium	22
1954	3-20	10,500	115,391	15	7,693	Kansas City, MO	Municipal Auditorium	24
1955	3-19	10,500	116,983	15	7,799	Kansas City, MO	Municipal Auditorium	24
1956	3-23	10,600	132,513	15	8,834	Evanston, IL	McGaw Hall	25
1957	3-23	10,500	108,891	14	7,778	Kansas City, MO	Municipal Auditorium	23
1958	3-22	18,803	176,878	14	12,634	Louisville, KY	Freedom Hall	24
1959	3-21	18,498	161,809	14	11,558	Louisville, KY	Freedom Hall	23
1960	3-19	14,500	155,491	16	9,718	San Francisco	Cow Palace	25
1961	3-25	10,700	169,520	14	12,109	Kansas City, MO	Municipal Auditorium	24
1962	3-24	18,469	177,469	14	12,676	Louisville, KY	Freedom Hall	25
1963	3-23	19,153	153,065	14	10,933	Louisville, KY	Freedom Hall	25
1964	3-21	10,864	140,790	14	10,056	Kansas City, MO	Municipal Auditorium	25
1965	3-20	13,204	140,673	13	10,821	Portland, OR	Memorial Coliseum	23
1966	3-19	14,253	140,925	13	10,840	College Park, MD	Cole Fieldhouse	22
1967	3-25	18,892	159,570	14	11,398	Louisville, KY	Freedom Hall	23
1968	3-23	14,438	160,888	14	11,492	Los Angeles	Sports Arena	23
1969	3-22	18,669	165,712	15	11,047	Louisville, KY	Freedom Hall	25
1970	3-21	14,380	146,794	16	9,175	College Park, MD	Cole Fieldhouse	25
1971	3-27	31,765	207,200	16	12,950	Houston	Astrodome	25
1972	3-25	15,063	147,304	16	9,207	Los Angeles	Sports Arena	25
1973	3-26	19,301	163,160	16	10,198	St. Louis	St. Louis Arena	25
1974	3-25	15,742	154,112	16	9,632	Greensboro, NC	Greensboro Coliseum	25
1975	3-31	15,151	183,857	18	10,214	San Diego	Sports Arena	32
1976	3-29	17,540	202,502	18	11,250	Philadelphia	Spectrum	32
1977	3-28	16,086	241,610	18	13,423	Atlanta	Omni	32
1978	3-27	18,721	227,149	18	12,619	St. Louis	Checkerdome	32
1979	3-26	15,410	262,101	22	11,914	Salt Lake City	Special Events Center	40
1980	3-24	16,637	321,260	26	12,356	Indianapolis	Market Square Arena	48
1981	3-30	18,276	347,414	26	13,362	Philadelphia	Spectrum	48
1982	3-29	61,612	427,251	26	16,433	New Orleans	Louisiana Superdome	48
1983	4-4	17,327	364,356	28	13,013	Albuquerque, NM	U. of New Mexico Pit	52
1984	4-2	38,471	397,481	28	14,196	Seattle	Kingdome	53
1985	4-1	23,124	422,519	34	12,427	Lexington, KY	Rupp Arena	64
1986	3-31	16,493	499,704	34	14,697	Dallas	Reunion Arena	64
1987	3-30	64,959	654,744	34	19,257	New Orleans	Louisiana Superdome	64
1988	4-4	16,392	558,998	34	16,441	Kansas City, MO	Kemper Arena	64
1989	4-3	39,187	613,242	34	18,037	Seattle	Kingdome	64
1990	4-2	17,765	537,138	34	15,798	Denver	McNichols Arena	64
1991	4-1	47,100	665,707	34	19,580	Indianapolis	RCA Dome	64
1992	4-6	50,379	580,462	34	17,072	Minneapolis	Humphrey Metrodome	64
1993	4-5	64,151	707,719	34	20,815	New Orleans	Louisiana Superdome	64
1994	4-4	23,674	578,007	34	17,000	Charlotte, NC	Charlotte Coliseum	64
1995	4-3	38,540	540,101	34	15,885	Seattle	Kingdome	64
1996	4-1	19,229	631,834	34	18,583	East Rutherford, NJ	Continental Airlines Arena	64
1997	3-31	47,028	646,531	34	19,016	Indianapolis	RCA Dome	64
1998	3-30	40,509	663,876	34	19,526	San Antonio	Alamodome	64
1999	3-29	41,340	720,685	34	21,197	St. Petersburg, FL	Tropicana Field	64
2000	4-3	43,116	624,777	34	18,375	Indianapolis	RCA Dome	64
2001	4-2	45,994	612,089	35	17,488	Minneapolis	Humphrey Metrodome	65
2002	4-1					Atlanta	Georgia Dome	
2003	4-7					New Orleans	Louisiana Superdome	
2004	4-5					San Antonio	Alamodome	
2005	4-4					St. Louis	Trans World Dome	
2006	4-3					Indianapolis	RCA Dome	
2007	4-2					Atlanta	Georgia Dome	

Tournament trivia

Question...

Has a school ever won the title game while playing in its home city?

Answer...

Yes, three times. CCNY won the title in New York City in 1950 and UCLA won in 1968 and 1972 in Los Angeles.

Years	Championship Game...			Tournament History...		
	Final Session	*Total Atten.	Avg. Atten.	All Sessions	*Total Atten.	*Avg. Atten.
1939-49	11	139,252	12,659	55	593,032	10,782
1950-59	10	134,091	13,409	125	1,241,435	9,931
1960-69	10	153,142	15,314	141	1,564,103	11,093
1970-79	10	179,159	17,916	174	1,935,789	11,125
1980-89	10	312,478	31,248	304	4,606,969	15,155
1990-99	10	389,715	38,972	340	6,272,060	18,447
2000-01	2	89,110	44,555	69	1,236,866	17,926
All Time	63	1,396,947	174,073	1,208	17,450,254	94,459

*Total attendance: 1939-69; paid attendance: 1970-present.

Attendance Records

HIGHEST TOTAL FOR TOURNAMENT

720,685, 1999 (34 sessions)
707,719, 1993 (34)
665,707, 1991 (34)
663,876, 1998 (34)
654,744, 1987 (34)
646,531, 1997 (34)
631,834, 1996 (34)
624,777, 2000 (34)
613,242, 1989 (34)
612,089, 2001 (35)

HIGHEST AVERAGE PER GAME OR SESSION FOR TOURNAMENT

21,197, 1999 (720,685 in 34 sessions)
20,815, 1993 (707,719 in 34)
19,580, 1991 (665,707 in 34)
19,526, 1998 (663,876 in 34)
19,257, 1987 (654,744 in 34)
19,016, 1997 (646,531 in 34)
18,583, 1996 (631,834 in 34)
18,375, 2000 (624,777 in 34)
18,037, 1989 (613,242 in 34)
17,488, 2001 (612,089 in 35)

HIGHEST GAME OR SESSION—TOURNAMENT

64,959, Louisiana Superdome, New Orleans, 1987, CH, Indiana (74) vs. Syracuse (73); NSF, Indiana (97) vs. UNLV (93) and Syracuse vs. Providence (63)
64,151, Louisiana Superdome, New Orleans, 1993, CH, North Carolina (77) vs. Michigan (71); NSF, North Carolina (78) vs. Kansas (68) and Michigan (81) vs. Kentucky (78) (ot)
61,612, Louisiana Superdome, New Orleans, 1982, CH, North Carolina (63) vs. Georgetown (62); NSF, North Carolina (68) vs. Houston (63) and Georgetown (50) vs. Louisville (46)
50,379, Hubert H. Humphrey Metrodome, Minneapolis, 1992, CH, Duke (71) vs. Michigan (51); NSF, Duke (81) vs. Indiana (78) and Michigan (76) vs. Cincinnati (72)
47,100, RCA Dome, Indianapolis, 1991, CH, Duke (72) vs. Kansas (65); NSF, Duke (79) vs. UNLV (77) and Kansas (79) vs. North Carolina (73)
47,028, RCA Dome, Indianapolis, 1997, CH, Arizona (84) vs. Kentucky (79) (ot); NSF, Arizona (66) vs. North Carolina (58) and Kentucky (78) vs. Minnesota (69)
43,116, RCA Dome, Indianapolis, 2000, CH, Michigan St. (89) vs. Florida (76); NSF, Michigan St. (53) vs. Wisconsin (41) and Florida (71) vs. North Carolina (59)
45,994, Hubert H. Humphrey Metrodome, Minneapolis, 2001, CH, Duke (82) vs. Arizona (72) (45,406 in semifinals)
42,519, Trans World Dome, St. Louis, 1999, MW RF, Michigan St. (73) vs. Kentucky (66)
42,440, Trans World Dome, St. Louis, 1999, MW RF, Michigan St. (54) vs. Oklahoma (46) and Kentucky (58) vs. Miami (Ohio) (43)
42,519, Trans World Dome, St. Louis, 1999, MW RF, Michigan St. (73) vs. Kentucky (66)
42,440, Trans World Dome, St. Louis, 1999, MW RF, Michigan St. (54) vs. Oklahoma (46) and Kentucky (58) vs. Miami (Ohio) (43)

[Note: Figures are paid attendance. For Final Four games, media are included.]

HIGHEST SINGLE GAME OR SESSION—FINAL FOUR

64,959, Louisiana Superdome, New Orleans, 1987, CH, Indiana (74) vs. Syracuse (73); NSF, Indiana (97) vs. UNLV (93) and Syracuse (77) vs. Providence (63)
64,151, Louisiana Superdome, New Orleans, 1993, CH, North Carolina (77) vs. Michigan (71); NSF, North Carolina (78) vs. Kansas (68) and Michigan (81) vs. Kentucky (78) (ot)
61,612, Louisiana Superdome, New Orleans, 1982, CH, North Carolina (63) vs. Georgetown (62); NSF, North Carolina (68) vs. Houston (63) and Georgetown (50) vs. Louisville (46)
50,379, Hubert H. Humphrey Metrodome, Minneapolis, 1992, CH, Duke (71) vs. Michigan (51); NSF, Duke (81) vs. Indiana (78) and Michigan (76) vs. Cincinnati (72)

47,100, RCA Dome, Indianapolis, 1991, CH, Duke (72) vs. Kansas (65); NSF, Duke (79) vs. UNLV (77) and Kansas (79) vs. North Carolina (73)
47,028, RCA Dome, Indianapolis, 1997, CH, Arizona (84) vs. Kentucky (79) (ot); NSF, Arizona (66) vs. North Carolina (58) and Kentucky (78) vs. Minnesota (69)
45,994, Hubert H. Humphrey Metrodome, Minneapolis, 2001, CH, Duke (82) vs. Arizona (72) (45,406 in semifinals)
43,116, RCA Dome, Indianapolis, 2000, CH, Michigan St. (89) vs. Florida (76); NSF, Michigan St. (53) vs. Wisconsin (41) and Florida (71) vs. North Carolina (59)
41,340, Tropicana Field, St. Petersburg, Florida, 1999, CH, Connecticut (77) vs. Duke (74); NSF, Connecticut (64) vs. Ohio St. (58) and Duke (68) vs. Michigan St. (62)
40,509, Alamodome, San Antonio, 1998, CH, Kentucky (78) vs. Utah (69); NSF, Utah (69) vs. North Carolina (65) and Kentucky (86) vs. Stanford (85) (ot)

[Note: Figures are paid attendance. For Final Four games, media are included.]

HIGHEST SINGLE GAME—NATIONAL CHAMPIONSHIP

64,959, Louisiana Superdome, New Orleans, 1987, Indiana (74) vs. Syracuse (73)
64,151, Louisiana Superdome, New Orleans, 1993, North Carolina (77) vs. Michigan (71)
61,612, Louisiana Superdome, New Orleans, 1982, North Carolina (63) vs. Georgetown (62)
50,379, Hubert H. Humphrey Metrodome, Minneapolis, 1992, Duke (71) vs. Michigan (51)
47,100, RCA Dome, Indianapolis, 1991, Duke (72) vs. Kansas (65)

HIGHEST SINGLE GAME—REGIONALS FINAL

42,519, Trans World Dome, St. Louis, 1999, MW RF, Michigan St. (73) vs. Kentucky (66)
40,589, Tropicana Field, St. Petersburg, Florida, 1998, South, Kentucky (96) vs. UCLA (68) and Duke (80) vs. Syracuse (67)
33,560, Hubert H. Humphrey Metrodome, Minneapolis, 1989, MW, Illinois (89) vs. Syracuse (86)
32,747, Louisiana Superdome, New Orleans, 1981, MW, LSU (96) vs. Wichita St. (85)
32,328, Georgia Dome, Atlanta, 1996, East, Massachusetts (86) vs. Georgetown (62)

HIGHEST SINGLE SESSION—REGIONALS SEMIFINAL

42,440, Trans World Dome, St. Louis, 1999, MW RF, Michigan St. (54) vs. Oklahoma (46) and Kentucky (58) vs. Miami (Ohio) (43)
40,589, Tropicana Field, St. Petersburg, Florida, 1998, South, Kentucky (96) vs. UCLA (68) and Duke (80) vs. Syracuse (67)
34,614, Georgia Dome, Atlanta, 1996, East, Massachusetts (79) vs. Arkansas (63) and Georgetown (98) vs. Texas Tech (90)
34,036, Louisiana Superdome, New Orleans, 1981, MW, Wichita St. (66) vs. Kansas (65) and LSU (72) vs. Arkansas (56)
33,560, Hubert H. Humphrey Metrodome, Minneapolis, 1989, MW, Illinois (83) vs. Louisville (69) and Syracuse (83) vs. Missouri (80)

HIGHEST SINGLE SESSION—SECOND ROUND

37,842, RCA Dome, Indianapolis, 1990, MW, Texas (73) vs. Purdue (72) and Xavier (74) vs. Georgetown (71)
37,444, RCA Dome, Indianapolis, 1989, MW, Illinois (72) vs. Ball St. (60) and Louisville (93) vs. Arkansas (84)
37,411, RCA Dome, Indianapolis, 1993, MW, Louisville (78) vs. Oklahoma St. (63) and Indiana (107) vs. Xavier (70)
34,576, RCA Dome, Indianapolis, 1987, MW, Duke (65) vs. Xavier (60) and Indiana (107) vs. Auburn (90)
32,758, RCA Dome, Indianapolis, 1999, South, Ohio St. (75) vs. Detroit (44) and Auburn (81) vs. Oklahoma St. (74)

HIGHEST SINGLE SESSION—FIRST ROUND

39,940, RCA Dome, Indianapolis, 1990, MW (2nd session), Texas (100) vs. Georgia (88) and Purdue (75) vs. Northeast La. (63)
39,417, RCA Dome, Indianapolis, 1990, MW (1st session), Georgetown (70) vs. Texas Southern (52) and Xavier (87) vs. Kansas St. (79)
38,387, RCA Dome, Indianapolis, 1993, MW (2nd session), Xavier (73) vs. New Orleans (55) and Indiana (97) vs. Wright St. (54)
38,343, RCA Dome, Indianapolis, 1993, MW (1st session), Oklahoma St. (74) vs. Marquette (62) and Louisville (76) vs. Delaware (70)
36,823, RCA Dome, Indianapolis, 1989, MW (2nd session), Illinois (77) vs. McNeese St. (71) and Ball St. (68) vs. Pittsburgh (64)

HIGHEST SINGLE GAME OR SESSION—EAST

34,614, Georgia Dome, Atlanta, 1996, RSF, Massachusetts (79) vs. Arkansas (63) and Georgetown (98) vs. Texas Tech (90)
32,328, Georgia Dome, Atlanta, 1996, RF, Massachusetts (86) vs. Georgetown (62)
30,617, Carrier Dome, Syracuse, N.Y., 1997, RSF, North Carolina (63) vs. California (57) and Louisville (78) vs. Texas (63)
30,388, Carrier Dome, Syracuse, N.Y., 2000, RF, Florida (77) vs. Oklahoma St. (65)
30,230, Carrier Dome, Syracuse, N.Y., 1997, RF, North Carolina (97) vs. Louisville (74)

HIGHEST SINGLE GAME OR SESSION—SOUTH

40,589, Tropicana Field, St. Petersburg, Florida, 1998, RF, Kentucky (86) vs. Duke (84); RSF Kentucky (96) vs. UCLA (68) and Duke (80) vs. Syracuse (67)
32,758, RCA Dome, Indianapolis, 1999, 2d, Ohio St. (75) vs. Detroit (44) and Auburn (81) vs. Oklahoma St. (74)
32,293, RCA Dome, Indianapolis, 1996, 2nd, Connecticut (95) vs. Eastern Mich. (81) and Mississippi St. (63) vs. Princeton (41)
31,373, RCA Dome, Indianapolis, 1996, 1st (1st session), Connecticut (68) vs. Colgate (59) and Eastern Mich. (75) vs. Duke (60)
31,569, RCA Dome, Indianapolis, 1996, 1st (2nd session), Mississippi St. (58) vs. Va. Commonwealth (51) and Princeton (43) vs. UCLA (41)

HIGHEST SINGLE GAME OR SESSION—MIDWEST

42,519, Trans World Dome, St. Louis, 1999, RF, Michigan St. (73) vs. Kentucky (66)
42,440, Trans World Dome, St. Louis, 1999, RSF, Michigan St. (54) vs. Oklahoma (46) and Kentucky (58) vs. Miami (Ohio) (43)
39,940, RCA Dome, Indianapolis, 1990, 1st (2nd session), Texas (100) vs. Georgia (88) and Purdue (75) vs. Northeast La. (63)
39,417, RCA Dome, Indianapolis, 1990, 1st (1st session), Georgetown (70) vs. Texas Southern (52) and Xavier (87) vs. Kansas St. (79)
38,387, RCA Dome, Indianapolis, 1993, 1st (2nd session), Xavier (73) vs. New Orleans (55) and Indiana (97) vs. Wright St. (54)

HIGHEST SINGLE GAME OR SESSION—WEST

24,196, Kingdome, Seattle, 1993, RF, Michigan (77) vs. Temple (72)
24,021, Kingdome, Seattle, 1993, RSF, Michigan (72) vs. George Washington (64) and Temple (67) vs. Vanderbilt (59)
23,666, Kingdome, Seattle, 1991, RF, UNLV (77) vs. Seton Hall (65)
23,229, Kingdome, Seattle, 1988, RSF, Arizona (99) vs. Iowa (79) and North Carolina (78) vs. Michigan (69)
23,035, Kingdome, Seattle, 1987, RSF, Iowa (93) vs. Oklahoma (91) (ot) and UNLV (92) vs. Wyoming (78)

Capacity Percentages for Preliminary-Round Games

	1st-2nd Round			Regionals			Non-Dome Total			Preliminary-Round Total		
	Capacity	Sold	Pct.	Capacity	Sold	Pct.	Capacity	Sold	Pct.	Capacity	Sold	Pct.
1989	425,625	359,064	84.4	186,834	176,390	94.4	421,734	357,653	84.8	612,459	535,454	87.4
1990	451,818	370,362	82.0	141,000	133,383	94.6	431,093	365,208	84.7	592,818	503,745	85.0
1991	449,275	379,708	84.5	234,666	191,759	81.7	357,375	336,994	94.3	683,941	571,467	83.7
1992	356,354	334,644	93.9	145,598	145,352	99.8	501,952	479,996	95.6	501,952	479,996	95.6
1993	495,390	415,274	83.8	181,400	168,141	92.7	399,290	375,443	94.0	676,790	583,415	86.2
1994	403,941	395,092	97.8	140,036	137,623	98.3	467,477	457,846	97.9	543,977	532,715	97.9
1995	339,921	329,521	96.9	134,520	133,658	99.4	474,441	463,179	97.6	474,441	463,179	97.6
1996	440,491	389,453	88.4	215,374	203,921	94.7	396,604	372,669	94.0	655,865	593,374	90.5
1997	419,198	359,994	85.9	217,000	192,553	88.7	489,098	429,765	87.9	636,198	552,547	86.9
1998	431,050	377,075	87.5	204,900	204,365	99.7	475,250	448,033	94.3	635,950	581,440	91.4
1999	486,603	428,373	88.0	208,114	207,456	99.7	450,817	426,988	94.7	694,717	635,829	91.5
2000	403,152	375,949	93.9	168,318	164,318	97.6	433,260	413,561	95.5	571,470	540,199	94.5
2001	396,150	317,827	80.2	216,500	184,546	85.2	412,650	359,392	87.1	612,650	502,373	82.0



More NCAA tournament games have been played in North Carolina than in any other state. Len Elmore and Maryland played in two of them in the Charlotte Coliseum in 1973.

All-Time Site and Arena History

TOURNAMENT GAMES BY ARENA

- 83, Municipal Auditorium, Kansas City, Mo., 1940-64
- 71, Madison Square Garden, New York, 1943-61
- 69, Jon M. Huntsman Center, Salt Lake City, 1971-2000
- 62, University of Dayton Arena, Dayton, Ohio, 1970-2001
- 55, Omni, Atlanta, 1977-92
- 53, Charlotte Coliseum I, Charlotte, N.C., 1958-93
- 51, Palestra, Philadelphia, 1939-84
- 50, Freedom Hall, Louisville, Ky., 1958-91
- 47, McKale Center, Tucson, Ariz., 1974-2000
- 45, Greensboro Coliseum, Greensboro, 1974-2001
- 45, RCA Dome, Indianapolis, 1987-2000

REGIONAL CHAMPIONSHIP GAMES BY ARENA

- 13, Municipal Auditorium, Kansas City, Mo., 1940-52
- 9, Continental Airlines Arena, East Rutherford, N.J., 1984-99
- 9, Madison Square Garden, New York, 1943-51
- 8, Allen Field House, Lawrence, Kan., 1956-78
- 8, Gill Coliseum, Corvallis, Ore., 1952-67
- 8, William Neal Reynolds Coliseum, Raleigh, N.C., 1952-82
- 6, Ahearn Field House, Manhattan, Kan., 1953-69
- 6, Cole Field House, College Park, Md., 1962-77
- 6, Palestra, Philadelphia, 1939-80
- 6, Rupp Arena, Lexington, Ky., 1977-96

NATIONAL CHAMPIONSHIP GAMES BY ARENA

- 9, Municipal Auditorium, Kansas City, Mo., 1940-64
- 7, Madison Square Garden, New York, 1943-50
- 6, Freedom Hall, Louisville, Ky., 1958-69
- 3, Kingdome, Seattle, 1984-95
- 3, Louisiana Superdome, New Orleans, 1982-93
- 3, RCA Dome, Indianapolis, 1991-2000
- 2, Cole Field House, College Park, Md., 1966-70
- 2, Hubert H. Humphrey Metrodome, 1992-2001
- 2, L.A. Sports Arena, Los Angeles, 1968-72
- 2, St. Louis Arena, St. Louis, 1973-78
- 2, Spectrum, Philadelphia, 1976-81

TOURNAMENT GAMES BY CITY

- 110, Kansas City, Mo., 1940-2001
- 76, New York, 1943-74
- 71, Charlotte, N.C., 1958-99
- 71, Salt Lake City, 1968-2000
- 67, Atlanta, 1977-2001
- 65, Philadelphia, 1939-2001
- 62, Dayton, Ohio, 1970-2001
- 61, Indianapolis, 1940-2000
- 61, Lexington, Ky., 1955-98
- 50, Louisville, Ky., 1958-91

REGIONAL CHAMPIONSHIPS BY CITY

- 17, Kansas City, Mo., 1940-95
- 10, Lexington, Ky., 1957-96
- 9, East Rutherford, N.J., 1986-99

- 9, New York, 1943-51
- 8, Corvallis, Ore., 1952-67
- 8, Lawrence, Kan., 1956-78
- 8, Raleigh, N.C., 1951-82
- 7, Charlotte, N.C., 1958-93
- 7, Philadelphia, 1939-2001
- 7, Provo, Utah, 1962-82

NATIONAL CHAMPIONSHIP GAMES BY CITY

- 10, Kansas City, Mo., 1940-88
- 7, New York, 1943-50
- 6, Louisville, Ky., 1958-69
- 5, Seattle, 1949-95
- 4, Indianapolis, 1980-2000
- 3, Minneapolis, 1951-2001
- 3, New Orleans, 1982-93
- 2, College Park, Md., 1966-70
- 2, Evanston, Ill., 1939-56
- 2, Los Angeles, 1968-72
- 2, Philadelphia, 1976-81
- 2, St. Louis, 1973-78

TOURNAMENT GAMES BY STATE

- 182, North Carolina, 1951-2001
- 139, New York, 1943-2001
- 133, Missouri, 1940-2001
- 126, Utah, 1960-2000
- 119, Texas, 1957-2001
- 117, Kentucky, 1955-98
- 114, California, 1939-2001
- 100, Indiana, 1940-2000
- 96, Ohio, 1957-2001
- 91, Kansas, 1953-94

REGIONAL CHAMPIONSHIPS BY STATE

- 22, Missouri, 1940-99
- 18, North Carolina, 1952-98
- 17, Kansas, 1953-78
- 14, California, 1939-2001
- 14, Kentucky, 1957-96
- 12, New York, 1943-2000
- 11, Texas, 1957-2001
- 10, Oregon, 1952-75
- 10, Utah, 1962-83
- 9, New Jersey, 1986-99

NATIONAL CHAMPIONSHIP GAMES BY STATE

- 12, Missouri, 1940-88
- 7, Kentucky, 1958-85
- 7, New York, 1943-50
- 5, Washington, 1949-95
- 4, California, 1960-75
- 4, Indiana, 1980-2000
- 3, Louisiana, 1982-93
- 3, Minnesota, 1951-2001
- 3, Texas, 1971-98
- 2, Illinois, 1939-56
- 2, Maryland, 1966-70
- 2, North Carolina, 1974-94
- 2, Pennsylvania, 1976-81

Tournament Game Arenas By Site

Number of games is indicated by (G), number of sessions by (S), year by (Yr.); national championship game by (CH), national third-place game by (3d), regional by (Rgnl), second round by (2d), first round by (1st), opening round by (OR), East region by (East), Southeast region by (SE), Midwest region by (ME), Midwest region (MW), West region by (W), Far West region by (FW), Eastern region by (En), Western region by (Wn), East-1 region by (E-1), East-2 region by (E-2), West-1 region by (WV-1), West-2 region by (WV-2), triple-header by (TH) and noncampus arena by (#).

G	S	Yr.	Round	City	Facility	Built	Capacity
ALABAMA							
3	2	1982	ME Rgnl	Birmingham	#Birmingham-Jefferson Civic Center	1976	17,500
4	2	1984	E 1st-2d	"	"	"	"
3	2	1985	SE Rgnl	"	"	"	"
6	3	1987	SE 1st-2d	"	"	"	"
3	2	1988	SE Rgnl	"	"	"	"
3	2	1997	SE Rgnl	"	"	"	"
3	2	1995	SE Rgnl	"	"	"	16,835
6	3	2000	S 1st-2d	"	"	"	"
4	2	1974	ME Rgnl	Tuscaloosa	Memorial Coliseum	1968	15,043
2	1	1975	ME 1st	"	"	"	"
4	2	1981	ME 1st-2d	"	"	"	"
(now named Coleman Coliseum)							
2	1	75	W 1st	Tempe	University Activity Center	1974	14,287
2	1	1975	W 1st	Tempe	University Activity Center	1974	14,287
2	1	1976	W 1st	"	"	"	"
2	1	1978	W 1st	"	"	"	"
4	2	1980	W 1st-2d	"	"	"	"
6	3	1992	W 1st-2d	"	"	"	"
6	3	1996	W 1st-2d	"	"	"	13,849
4	2	1974	W Rgnl	Tucson	McKale Center	1973	14,214
2	1	1977	W 1st	"	"	"	"
2	1	1979	W 2d	"	"	"	"
3	2	1980	W Rgnl	"	"	"	"
6	3	1987	W 1st-2d	"	"	"	13,124
6	3	1989	W 1st-2d	"	"	"	13,477
6	3	1991	W 1st-2d	"	"	"	"
6	3	1993	W 1st-2d	"	"	"	"
6	3	1997	W 1st-2d	"	"	"	14,428
6	3	2000	W 1st-2d	"	"	"	13,859
3	2	1999	W Rgnl	Phoenix	#America West Arena	1992	19,022
CALIFORNIA							
3	2	1998	W Rgnl	Anaheim	#Arrowhead Pond	1993	17,533
3	2	2001	W Rgnl	"	"	"	17,268
2	1	1958	W 1st	Berkeley	Harmon Arena	1933	6,450
6	3	1986	W 1st-2d	Long Beach	#Long Beach Arena	1965	12,000
6	3	1990	W 1st-2d	"	"	"	"
4	2	1968	Final Four	Los Angeles	#L.A. Sports Arena	1959	15,509
4	2	1972	Final Four	"	"	"	"
3	2	1994	W Rgnl	"	"	"	14,616
4	2	1966	W Rgnl	"	Pauley Pavilion	1965	12,543
4	2	1969	W Rgnl	"	"	"	"
4	2	1973	W Rgnl	"	"	"	"
3	2	1976	W Rgnl	"	"	"	"
4	2	1979	W 1st-2d	"	"	"	"
4	2	1981	W 1st-2d	"	"	"	"
3	2	1984	W Rgnl	"	"	"	"
6	3	1988	W 1st-2d	"	"	"	"
3	2	1990	W Rgnl	Oakland	#Oakland-Alameda County Coliseum	1966	15,000
3	2	1995	W Rgnl	"	"	"	15,039
1	1	1953	W-2 1st	Palo Alto	Old Pavilion	1922	3,000
6	3	1994	W 1st-2d	Sacramento	#Arco Arena	1981	16,418
6	3	1998	W 1st-2d	"	"	"	16,621
4	2	1975	Final Four	San Diego	#San Diego Sports Arena	1967	13,741
6	3	2001	W 1st-2d	"	Cox Arena at Aztec Bowl	1997	12,200
4	2	1939	Wn Rgnl	San Francisco	#California Coliseum	1938	9,476
2	1	1955	W-2 1st	"	#Cow Palace	1941	14,500
4	2	1958	W Rgnl	"	"	"	"
4	2	1959	W Rgnl	"	"	"	"
1	1	1960	W 1st	"	"	"	"
4	2	1960	Final Four	"	"	"	"
3	2	1997	W Rgnl	San Jose	#San Jose Arena	1993	18,543
COLORADO							
3	2	1985	W Rgnl	Denver	#McNichols Sports Arena	1974	17,022
3	2	1989	W Rgnl	"	"	"	"
3	2	1990	Final Four	"	"	"	"
3	2	1996	W Rgnl	"	"	"	"
6	3	1999	W 1st-2d	"	"	"	18,707
2	1	1967	MW,W 1st	Fort Collins	Moby Arena	1966	9,001
CONNECTICUT							
4	2	1983	E 1st-2d	Hartford	#Hartford Civic Center	1975	16,016
6	3	1985	E 1st-2d	"	"	"	"
6	3	1988	E 1st-2d	"	"	"	"
6	3	1990	E 1st-2d	"	"	"	"
6	3	1998	E 1st-2d	"	"	"	"
DISTRICT OF COLUMBIA							
6	3	1998	E 1st-2d	Washington	#MCI Center	1997	19,288
FLORIDA							
3	2	1994	E Rgnl	Miami	#Miami Arena	1988	15,308
6	3	1993	SE 1st-2d	Orlando	#Orlando Arena	1989	14,910



Photo from Georgia Tech sports information

In 1990, seniors Karl Brown (5) and Johnny McNeil celebrate Georgia Tech's only victory in an NCAA regional final by indicating the team's next stop, McNichols Sports Arena in Denver, a city that has hosted one Final Four.

Question...

What are the only two father-and-son combinations to win NCAA championships as players?

Answer...

Marques (UCLA 1975) and Kris (UCLA 1995) Johnson; and Henry (UCLA, 1970, '71, '72) and Mike (Arizona 1997) Bibby



Alec Kessler led Georgia to a 1990 NCAA tournament berth and first-round game in the RCA Dome in Indianapolis.

G	S	Yr.	Round	City	Facility	Built	Capacity
FLORIDA							
6	3	1996	SE 1st-2d	"	"		16,894
6	3	1999	South 1st-2d	"	"		17,164
6	3	1994	SE 1st-2d	St. Petersburg	#ThunderDome	1990	22,665
3	2	1998	South Rgnl	"	#Tropicana Field (name change)		40,589
3	2	1999	Final Four	"	"		41,340
6	3	1995	SE 1st-2d	Tallahassee	#TallahasseeLeon County Civic Center	1981	13,000
4	2	1983	ME 1st-2d	Tampa	USF Sun Dome	1980	10,347
GEORGIA							
4	2	1971	ME Rgnl	Athens	Georgia Coliseum	1964	11,200
3	2	1996	E Rgnl	Atlanta	#Georgia Dome	1992	40,628
6	3	1998	South 1st-2d	"	"		26,700
3	2	2001	South Rgnl	"	"		12,375
4	2	1977	Final Four	"	#Omni	1972	16,271
3	2	1981	E Rgnl	"	"		"
3	2	1984	E Rgnl	"	"		"
6	3	1985	E 1st-2d	"	"		"
3	2	1986	SE Rgnl	"	"		"
6	3	1987	SE 1st-2d	"	"		"
6	3	1988	SE 1st-2d	"	"		"
6	3	1989	SE 1st-2d	"	"		"
6	3	1990	E 1st-2d	"	"		"
6	3	1991	SE 1st-2d	"	"		"
6	3	1992	SE 1st-2d	"	"		"
IDAHO							
4	2	1983	W 1st-2d	Boise	BSU Pavilion	1982	12,200
6	3	1989	W 1st-2d	"	"		"
6	3	1992	W 1st-2d	"	"		"
6	3	1995	W 1st-2d	"	"		12,375
6	3	1998	W 1st-2d	"	"		11,900
6	3	2001	W 1st-2d	"	"		12,375
1	1	1957	W 1st	Pocatello	ISU Gymnasium (now named Reed Gym)	1948	3,500
2	1	1972	W 1st	"	ISU Minidome	1969	12,000
2	1	1974	W 1st	"	"		"
2	1	1977	W 1st	"	"		"
					(now named Holt Arena)		
ILLINOIS							
2	1	1969	ME 1st	Carbondale	SIU Arena	1964	10,014
1	1	1960	MW 1st	Chicago	Alumni Arena	1956	5,308
4	2	1952	E-2 Rgnl	"	#Chicago Stadium	1929	17,458
4	2	1953	E-2 Rgnl	"	"		"
6	3	1998	MW 1st-2d	"	#United Center	1994	22,579
4	2	1955	E-2 Rgnl	Evanston	McGaw Hall	1952	10,500
4	2	1956	Final Four	"	"		"
2	1	1958	ME 1st	"	"		"
4	2	1959	ME Rgnl	"	"		"
2	1	1963	ME 1st	"	"		"
2	1	1964	ME 1st	"	"		"
4	2	1967	ME Rgnl	"	"		"
					(now named Welsh-Ryan Arena/McGaw Hall)		
1	1	1939	CH	"	Patten Gym	1910	6,000
1	1	1954	W-1 1st	Peoria	Robertson Memorial Field House	1949	7,300
6	3	1987	MW 1st-2d	Rosemont	#Rosemont Horizon	1980	17,500
6	3	1993	MW 1st-2d	"	"		"
INDIANA							
2	1	1977	ME 1st	Bloomington	Assembly Hall	1971	17,357
2	1	1979	ME 2d	"	"		"
3	2	1981	ME Rgnl	"	"		"
4	2	1983	ME 1st-2d	Evansville	#Roberts Municipal Stadium	1956	11,096
2	1	1953	E-2 1st	Fort Wayne	#Allen County Coliseum	1952	9,500
2	1	1954	E-2 1st	"	"		"
2	1	1956	ME 1st	"	"		"
3	2	1940	En Rgnl	Indianapolis	Butler Field House (now named Hinkle Field House)	1928	15,000
6	3	1987	MW 1st-2d	"	#Hoosier Dome	1984	47,100
6	3	1989	MW 1st-2d	"	"		"
6	3	1990	MW 1st-2d	"	"		"
3	2	1991	Final Four	"	"		"
6	3	1993	MW 1st-2d	"	"		"
6	3	1996	SE 1st-2d	"	#RCA Dome (name change)		40,868
3	2	1997	Final Four	"	"		47,028
6	3	1999	South 1st-2d	"	"		37,900
3	2	2000	Final Four	"	"		43,116
2	1	1978	ME 1st	"	#Market Square Arena	1974	17,000
3	2	1979	ME Rgnl	"	"		"
4	2	1980	Final Four	"	"		"
4	2	1982	ME 1st-2d	"	"		"
2	1	1971	ME 1st	South Bend	Athletic & Convocation Center	1968	11,350
2	1	1976	ME 1st	"	"		"
6	3	1985	SE 1st-2d	"	"		"
6	3	1988	MW 1st-2d	"	The Joyce Center (name change)		"
2	1	1974	ME 1st	Terre Haute	Hulman Center	1973	10,200
4	2	1980	ME 1st-2d	West Lafayette	Mackey Arena	1967	14,123
IOWA							
4	2	1972	MW Rgnl	Ames	James Hilton Coliseum	1971	14,020
4	2	1954	E-2 Rgnl	Iowa City	Iowa Field House	1927	13,500
4	2	1956	MW Rgnl	"	"		"
4	2	1962	ME Rgnl	"	"		"
4	2	1966	ME Rgnl	"	"		"

Question...

Which are the only two schools to win the championship one season and have a losing record the next season?

Answer...

Stanford (1942) and Michigan State (1979).

G	S	Yr.	Round	City	Facility	Built	Capacity
KANSAS							
4	2	1956	MW Rgnl	Lawrence	Allen Field House	1955	15,200
4	2	1958	MW Rgnl	"	"	"	"
4	2	1959	MW Rgnl	"	"	"	"
4	2	1961	MW Rgnl	"	"	"	"
4	2	1963	MW Rgnl	"	"	"	"
4	2	1967	MW Rgnl	"	"	"	"
4	2	1970	MW Rgnl	"	"	"	"
2	1	1976	MW 1st	"	"	"	"
3	2	1978	MW Rgnl	"	"	"	"
4	2	1979	MW 1st-2d	"	"	"	"
4	2	1953	W-1 Rgnl	Manhattan	Ahearn Field House	1951	12,500
4	2	1955	W-1 Rgnl	"	"	"	"
4	2	1960	MW Rgnl	"	"	"	"
4	2	1962	MW Rgnl	"	"	"	"
4	2	1965	MW Rgnl	"	"	"	"
4	2	1969	MW Rgnl	"	"	"	"
2	1	1956	MW 1st	Wichita	Levitt Arena	1955	10,716
4	2	1964	MW Rgnl	"	"	"	10,666
2	1	1966	MW, W 1st	"	"	"	"
4	2	1968	MW Rgnl	"	"	"	"
4	2	1971	MW Rgnl	"	"	"	"
2	1	1973	MW 1st	"	"	"	"
2	1	1978	MW 1st	"	"	"	"
4	2	1981	MW 1st-2d	"	"	"	"
6	3	1994	MW 1st-2d	"	#Kansas Coliseum	1978	10,086
KENTUCKY							
2	1	1965	ME 1st	Bowling Green	E.A. Diddle Arena	1963	8,500
4	2	1980	ME 1st-2d	"	"	"	12,370
2	1	1955	E-2 1st	Lexington	Memorial Coliseum	1950	11,500
4	2	1957	ME Rgnl	"	"	"	"
4	2	1958	ME Rgnl	"	"	"	"
2	1	1959	ME 1st	"	"	"	"
2	1	1960	ME 1st	"	"	"	"
2	1	1962	ME 1st	"	"	"	"
4	2	1965	ME Rgnl	"	"	"	"
2	1	1967	ME 1st	"	"	"	"
4	2	1968	ME Rgnl	"	"	"	"
2	1	1975	ME 1st	"	"	"	"
3	2	1977	ME Rgnl	"	#Rupp Arena	1976	23,000
3	2	1980	ME Rgnl	"	"	"	"
3	2	1984	ME Rgnl	"	"	"	"
3	2	1985	Final Four	"	"	"	"
3	2	1989	SE Rgnl	"	"	"	"
3	2	1992	SE Rgnl	"	"	"	"
6	3	1994	SE 1st-2d	"	"	"	22,564
3	2	1996	SE Rgnl	"	"	"	23,890
6	3	1998	South 1st-2d	"	"	"	22,700
4	2	1958	Final Four	Louisville	#Freedom Hall	1956	17,865
4	2	1959	Final Four	"	"	"	18,750
4	2	1960	ME Rgnl	"	"	"	"
6	3	1961	ME 1st-Rgnl	"	"	"	18,000
4	2	1962	Final Four	"	"	"	"
4	2	1963	Final Four	"	"	"	"
4	2	1967	Final Four	"	"	"	18,800
4	2	1969	Final Four	"	"	"	"
3	2	1976	MW Rgnl	"	"	"	16,433
4	2	1983	MW 1st-2d	"	"	"	16,613
3	2	1987	SE Rgnl	"	"	"	19,865
6	3	1991	SE 1st-2d	"	"	"	18,946
LOUISIANA							
3	2	1976	ME Rgnl	Baton Rouge	Assembly Center	1971	14,327
2	1	1977	ME 1st	"	"	"	14,327
6	3	1986	ME 1st-2d	"	"	"	14,236
4	2	1942	En Rgnl	New Orleans	Tulane Gym (now named Fogelman Arena)	1933	3,000
3	2	1981	MW Rgnl	"	#Louisiana Superdome	1975	64,959
3	2	1982	Final Four	"	"	"	"
3	2	1987	Final Four	"	"	"	"
3	2	1990	SE Rgnl	"	"	"	"
3	2	1993	Final Four	"	"	"	64,151
6	3	1999	MW 1st-2d	"	"	"	24,912
6	3	2001	South 1st-2d	"	"	"	"
MARYLAND							
6	3	1995	E 1st-2d	Baltimore	#Baltimore Arena	1962	12,959
4	2	1962	E Rgnl	College Park	Cole Field House	1955	14,500
4	2	1963	E Rgnl	"	"	"	"
4	2	1965	E Rgnl	"	"	"	"
4	2	1966	Final Four	"	"	"	"
4	2	1967	E Rgnl	"	"	"	"
2	1	1968	E 1st	"	"	"	"
4	2	1969	E Rgnl	"	"	"	"
4	2	1970	Final Four	"	"	"	"
3	2	1977	E Rgnl	"	"	"	"
6	3	1991	E 1st-2d	"	"	"	"
6	3	1994	E 1st-2d	Landover	#USAir Arena	1973	19,611
MASSACHUSETTS							
6	3	1992	E 1st-2d	Worcester	#Centrum	1983	13,452
6	3	1999	E 1st-2d	Boston	#FleetCenter	1995	18,800



Photo by Rich Clarkson

Kentucky forward Larry Conley attempts to shoot between Willie Worsley (24) and Willie Cager of Texas Western (later UTEP) during the 1966 NCAA championship game in Cole Field House in College Park, Maryland. Texas Western won the title.

Only five schools have appeared in the Final Four and the College World Series in the same school year. They are: Bradley in 1950, Houston in 1967, UCLA in 1967, LSU in 1986 and Kansas in 1993.

Tournament facts



Photo by Rich Clarkson

The state of Missouri has hosted the Final Four a record 12 times. In 1978, the Checkerdome in St. Louis was the site of the championship game, in which Jack Givens (21) helped Kentucky to the title over Duke.

Question...

Can you match the following arenas that have hosted the Final Four with the city in which they are located?

Arena

1. Checkerdome
2. Cole Fieldhouse
3. Cow Palace
4. Freedom Hall
5. Humphrey Metrodome
6. Kemper Arena
7. Kingdome
8. McGaw Hall
9. McNichols Arena
10. Omni
11. The Pit
12. Reunion Arena
13. Rupp Arena
14. Spectrum
15. Superdome

City

- A. Albuquerque, NM
- B. Atlanta
- C. College Park, MD
- D. Dallas
- E. Denver
- F. Evanston, IL
- G. Kansas City, MO
- H. Lexington, KY
- J. Louisville KY
- K. Minneapolis
- L. New Orleans
- M. Philadelphia
- N. St. Louis
- P. San Francisco
- Q. Seattle

Answer...

- 1-N, 2-C, 3-P, 4-J, 5-K, 6-G, 7-Q, 8-F, 9-E, 10-B, 11-A, 12-D, 13-H, 14-M, 15-L

G	S	Yr.	Round	City	Facility	Built	Capacity
MICHIGAN							
6	3	1997	MW 1st-2d	Auburn Hills	#Palace of Auburn Hills	1988	21,020
3	2	2000	MW Rgnl	"	"	"	21,214
4	2	1963	ME Rgnl	East Lansing	Jenison Field House	1940	12,500
3	2	1988	MW Rgnl	Pontiac	#Pontiac Silverdome	1975	36,000
3	2	1991	MW Rgnl	"	"	"	"
MINNESOTA							
6	3	1986	MW 1st-2d	Minneapolis	#Hubert H. Humphrey Metrodome	1982	35,000
3	2	1989	MW Rgnl	"	"	"	"
6	3	1991	MW 1st-2d	"	"	"	"
3	2	1992	Final Four	"	"	"	"
3	2	1996	MW Rgnl	"	"	"	"
6	3	2000	MW 1st-2d	"	"	"	"
3	2	2001	Final Four	"	"	"	45,994
2	1	1951	CH-3d	"	Williams Arena	1928	18,052
4	2	1964	ME Rgnl	"	"	"	"
MISSOURI							
3	2	1983	MW Rgnl	Kansas City	#Kemper Arena	1975	17,153
3	2	1986	MW Rgnl	"	"	"	"
3	2	1988	Final Four	"	"	"	"
3	2	1992	MW Rgnl	"	"	"	"
3	2	1995	MW Rgnl	"	"	"	16,668
6	3	1997	MW 1st-2d	"	"	"	"
6	3	2001	MW 1st-2d	"	"	"	17,484
5	3	1940	Wn Rgnl-CH	"	#Municipal Auditorium	1935	10,500
5	3	1941	Wn Rgnl-CH	"	"	"	"
5	3	1942	Wn Rgnl-CH	"	"	"	"
4	2	1943	Wn Rgnl	"	"	"	"
4	2	1944	Wn Rgnl	"	"	"	"
4	2	1945	Wn Rgnl	"	"	"	"
4	2	1946	Wn Rgnl	"	"	"	"
4	2	1947	Wn Rgnl	"	"	"	"
4	2	1948	Wn Rgnl	"	"	"	"
4	2	1949	Wn Rgnl	"	"	"	"
4	2	1950	Wn Rgnl	"	"	"	"
8	4	1951	W 1st-Rgnl	"	"	"	"
4	2	1952	W-1 Rgnl	"	"	"	"
4	2	1953	Final Four	"	"	"	"
4	2	1954	Final Four	"	"	"	"
4	2	1955	Final Four	"	"	"	"
4	2	1957	Final Four	"	"	"	"
4	2	1961	Final Four	"	"	"	"
4	2	1964	Final Four	"	"	"	"
4	2	1973	Final Four	St. Louis	#Arena	1929	18,500
4	2	1978	Final Four	"	#Checkerdome (name change)	"	"
3	2	1982	MW Rgnl	"	"	"	"
3	2	1984	MW Rgnl	"	#Arena (name changed back)	"	"
3	2	1993	MW Rgnl	"	"	"	"
3	2	1998	MW Rgnl	"	#Kiel Center	1994	22,172
3	2	1999	MW Rgnl	"	#Trans World Dome	1995	37,542
NEBRASKA							
4	2	1980	MW 1st-2d	Lincoln	Bob Devaney Sports Center	1976	14,478
4	2	1984	MW 1st-2d	"	"	"	"
6	3	1988	MW 1st-2d	"	"	"	"
2	1	1977	MW 1st	Omaha	#Omaha Civic Auditorium	1954	9,373
NEW JERSEY							
4	2	1984	E 1st-2d	East Rutherford	#Meadowlands Arena	1981	20,149
3	2	1986	E Rgnl	"	"	"	"
3	2	1987	E Rgnl	"	"	"	"
3	2	1988	E Rgnl	"	"	"	"
3	2	1989	E Rgnl	"	"	"	"
3	2	1990	E Rgnl	"	"	"	"
3	2	1991	E Rgnl	"	"	"	"
3	2	1993	E Rgnl	"	"	"	"
3	2	1995	E Rgnl	"	"	"	19,761
3	2	1996	Final Four	"	#Continental Airlines Arena (name change)	"	19,229
3	2	1999	E Rgnl	"	"	"	19,557
1	1	1970	E 1st	Princeton	Jadwin Gymnasium	1969	7,550
1	1	1972	E 1st	"	"	"	"
NEW MEXICO							
4	2	1968	W Rgnl	Albuquerque	University Arena	1966	14,831
3	2	1978	W Rgnl	"	"	"	17,126
3	2	1983	Final Four	"	"	"	"
6	3	1985	W 1st-2d	"	"	"	"
3	2	1992	W Rgnl	"	"	"	"
6	3	1996	W 1st-2d	"	"	"	"
3	2	2000	W Rgnl	"	"	"	16,004
1	1	1959	W 1st	Las Cruces	Las Cruces HS Gym	1958	5,000
2	1	1969	W 1st	"	Pan American Center	1968	13,222
2	1	1972	MW 1st	"	"	"	"
4	2	1975	MW Rgnl	"	"	"	"
NEW YORK							
6	3	1995	E 1st-2d	Albany	#Knickerbocker Arena	1990	14,820
2	1	1954	E-1 1st	Buffalo	#Buffalo Memorial Auditorium	1936	13,900
6	3	2000	E 1st-2d	"	#Marine Midland Arena	1996	19,357
1	1	1970	E 1st	Jamaica	Alumni Hall	1962	6,000
1	1	1971	E 1st	"	"	"	"
1	1	1972	E 1st	"	"	"	"
1	1	1973	E 1st	"	"	"	"

G	S	Yr.	Round	City	Facility	Built	Capacity
NEW YORK							
1	1	1974	E 1st	"	"		"
5	3	1943	En Rgnl-CH	New York City	#Madison Square Garden	1925	18,479
5	3	1944	En Rgnl-CH	"	"		"
5	3	1945	En Rgnl-CH	"	"		"
6	3	1946	En Rgnl-CH-3d	"	"		"
6	3	1947	En Rgnl-CH-3d	"	"		"
6	3	1948	En Rgnl-CH-3d	"	"		"
4	2	1949	En Rgnl	"	"		"
6	3	1950	En Rgnl-CH-3d	"	"		"
6	3	1951	E 1st-Rgnl	"	"		"
3	1	1955	E-1 1st TH	"	"		"
4	2	1956	E 1st	"	"		"
3	1	1957	E 1st TH	"	"		"
3	1	1958	E 1st TH	"	"		"
3	1	1959	E 1st TH	"	"		"
3	1	1960	E 1st TH	"	"		"
3	1	1961	E 1st TH	"	"		"
3	2	1983	E Rgnl	Syracuse	Carrier Dome	1980	33,000
6	3	1986	E 1st-2d	"	"		"
6	3	1987	E 1st-2d	"	"		"
6	3	1991	E 1st-2d	"	"		"
6	3	1993	E 1st-2d	"	"		"
3	2	1997	E Rgnl	"	"		32,048
3	2	2000	E Rgnl	"	"		31,805
4	2	1982	E 1st-2d	Uniondale	#Nassau Coliseum	1972	16,547
6	3	1994	E 1st-2d	"	"		15,510
6	3	2001	E 1st-2d	"	"		16,115
NORTH CAROLINA							
6	3	1988	E 1st-2d	Chapel Hill	Dean E. Smith Center	1986	21,444
4	2	1958	E Rgnl	Charlotte	#Charlotte Coliseum I	1951	11,666
4	2	1959	E Rgnl	"	"		"
4	2	1960	E Rgnl	"	"		"
4	2	1961	E Rgnl	"	"		"
4	2	1973	E Rgnl	"	"		"
2	1	1975	E 1st	"	"		"
2	1	1976	E 1st	"	"		"
2	1	1978	E 1st	"	"		"
4	2	1981	E 1st-2d	"	"		"
4	2	1982	E 1st-2d	"	"		"
4	2	1984	E 1st-2d	"	"		"
6	3	1986	SE 1st-2d	"	"		"
6	3	1987	E 1st-2d	"	"		"
3	2	1993	SE Rgnl	"	"		"
3	2	1991	SE Rgnl	"	#Charlotte Coliseum II	1988	23,339
3	2	1994	Final Four	"	"		22,876
6	3	1997	SE 1st-2d	"	"		22,806
6	3	1999	E 1st-2d	"	"		"
1	1	1954	E-1 1st	Durham	Cameron Indoor Stadium	1939	8,564
4	2	1974	Final Four	Greensboro	#Greensboro Coliseum	1959	16,000
3	2	1976	E Rgnl	"	"		"
3	2	1979	E Rgnl	"	"		"
4	2	1980	E 1st-2d	"	"		"
4	2	1983	E 1st-2d	"	"		"
6	3	1986	E 1st-2d	"	"		"
6	3	1989	E 1st-2d	"	"		"
6	3	1992	E 1st-2d	"	"		"
3	2	1998	E Rgnl	"	"		23,235
6	3	2001	E 1st-2d	"	"		"
2	1	1951	E 1st	Raleigh	William Neal Reynolds Coliseum	1949	12,400
4	2	1952	E-1 Rgnl	"	"		"
4	2	1953	E-1 Rgnl	"	"		"
4	2	1964	E Rgnl	"	"		"
4	2	1966	E Rgnl	"	"		"
4	2	1968	E Rgnl	"	"		"
2	1	1969	E 1st	"	"		"
4	2	1971	E Rgnl	"	"		"
4	2	1974	E Rgnl	"	"		"
2	1	1977	E 1st	"	"		"
4	2	1979	E 1st-2d	"	"		"
3	2	1982	E Rgnl	"	"		"
6	3	1993	E 1st-2d	Winston-Salem	#Lawrence Joel Veterans Memorial Coliseum	1989	14,407
6	3	1997	E 1st-2d	"	"		14,368
6	3	2000	E 1st-2d	"	"		14,252
OHIO							
3	2	1979	MW Rgnl	Cincinnati	#Riverfront Coliseum	1975	16,562
3	2	1987	MW Rgnl	"	"		"
6	3	1988	SE 1st-2d	"	"		"
6	3	1992	SE 1st-2d	"	"		"
6	3	2000	MW 1st-2d	Cleveland	CSU Convocation Center	1991	13,374
2	1	1957	ME 1st	Columbus	St. John Arena	1956	13,489
4	2	1970	ME Rgnl	"	"		"
2	1	1970	ME 1st	Dayton	University of Dayton Arena	1969	13,455
4	2	1972	ME Rgnl	"	"		"
2	1	1973	ME 1st	"	"		"
4	2	1975	ME Rgnl	"	"		"



Photo by Rich Clarkson

The Final Four semifinal game in the Greensboro Coliseum in North Carolina featured David Thompson (44) of eventual champion North Carolina State and UCLA's Bill Walton (32).

Question...

Have two teams from the same state ever played each other in the championship game?

Answer...

Yes, Cincinnati defeated Ohio State in both 1961 and 1962.



Photo by Rich Clarkson

The Spectrum in Philadelphia has hosted two Final Fours, including 1976, when Hoosiers guard Quinn Buckner celebrated Indiana's title by relaxing in the Oval Office during the team's visit to the White House.

G	S	Yr.	Round	City	Facility	Built	Capacity
OHIO							
2	1	1976	ME 1st	"	"		"
3	2	1978	ME Rgnl	"	"		"
4	2	1981	ME 1st-2d	"	"		"
2	1	1983	OR	"	"		"
2	1	1984	OR	"	"		"
6	3	1985	SE 1st-2d	"	"		"
6	3	1986	MW 1st-2d	"	"		"
6	3	1991	MW 1st-2d	"	"		"
6	3	1992	MW 1st-2d	"	"		"
6	3	1995	MW 1st-2d	"	"		"
7	4	2001	MW OR, 1st-2d	"	"		"
2	1	1966	ME 1st	Kent	Memorial Gymnasium	1950	6,034
2	1	1968	ME 1st	"	"		"
OKLAHOMA							
1	1	1955	W-1 1st	El Reno	Thunderbird Coliseum	1954	4,000
2	1	1977	MW 1st	Norman	Lloyd Noble Center	1975	10,871
1	1	1957	MW 1st	Oklahoma City	Capitol Hill HS Arena	1953	4,000
3	2	1977	MW Rgnl	"	#Myriad Convention Center	1974	15,200
6	3	1994	MW 1st-2d	"	"		13,268
6	3	1998	MW 1st-2d	"	"		"
4	2	1954	W-1 Rgnl	Stillwater	Gallagher Hall	1938	7,400
1	1	1958	MW 1st	"	"		"
4	2	1974	MW Rgnl	Tulsa	Mabee Center	1972	10,575
2	1	1975	MW 1st	"	"		"
2	1	1978	MW 1st	"	"		"
4	2	1982	MW 1st-2d	"	"		"
6	3	1985	MW 1st-2d	"	"		"
OREGON							
4	2	1952	W-2 Rgnl	Corvallis	Gill Coliseum	1949	10,000
4	2	1953	W-2 Rgnl	"	"		"
6	3	1954	W-2 1st-Rgnl	"	"		"
4	2	1955	W-2 Rgnl	"	"		"
4	2	1956	FW Rgnl	"	"		"
4	2	1957	W Rgnl	"	"		"
1	1	1960	W 1st	"	"		"
2	1	1962	W 1st	"	"		"
4	2	1964	W Rgnl	"	"		"
4	2	1967	W Rgnl	"	"		"
4	2	1983	W 1st-2d	"	"		"
2	1	1963	W 1st	Eugene	McArthur Court	1926	10,099
2	1	1964	W 1st	"	"		"
2	1	1976	W 1st	"	"		"
2	1	1978	W 1st	"	"		"
6	3	1961	W 1st-Rgnl	Portland	#Memorial Coliseum	1960	12,666
4	2	1965	Final Four	"	"		"
4	2	1975	W Rgnl	"	"		"
1	1	1959	W 1st	"	#Pacific International Livestock Pavilion (now named Pacific Exposition Center)	1919	4,200
PENNSYLVANIA							
3	2	2001	E Rgnl	Philadelphia	First Union Center	1996	20,060
3	2	1939	En Rgnl	"	Palestra	1927	9,200
2	1	1953	E-1 1st	"	"		"
4	2	1954	E-1 Rgnl	"	"		"
4	2	1955	E-1 Rgnl	"	"		"
4	2	1956	E Rgnl	"	"		"
4	2	1957	E Rgnl	"	"		"
3	1	1962	E 1st TH	"	"		"
3	1	1963	E 1st TH	"	"		"
3	1	1964	E 1st TH	"	"		"
3	1	1965	E 1st TH	"	"		"
1	1	1970	E 1st	"	"		"
1	1	1971	E 1st	"	"		"
1	1	1973	E 1st	"	"		"
1	1	1974	E 1st	"	"		"
2	1	1975	E 1st	"	"		"
2	1	1977	E 1st	"	"		"
2	1	1978	E 1st	"	"		"
3	2	1980	E Rgnl	"	"		"
2	1	1983	OR	"	"		"
3	1	1984	OR TH	"	"		"
4	2	1976	Final Four	"	#Spectrum	1967	17,937
4	2	1981	Final Four	"	"		"
3	2	1992	E Rgnl	"	"		"
6	3	1997	E 1st-2d	Pittsburgh	#Civic Arena	1961	17,509
RHODE ISLAND							
1	1	1967	E 1st	Kingston	Keaney Gymnasium	1953	5,000
1	1	1968	E 1st	"	"		"
1	1	1969	E 1st	"	"		"
4	2	1975	E Rgnl	Providence	#Providence Civic Center	1972	12,155
2	1	1976	E 1st	"	"		"
3	2	1978	E Rgnl	"	"		"
2	1	1979	E 2d	"	"		"
4	2	1980	E 1st-2d	"	"		"
4	2	1981	E 1st-2d	"	"		"
3	2	1985	E Rgnl	"	"		"
6	3	1989	E 1st-2d	"	"		13,100
6	3	1996	E 1st-2d	"	"		11,931

Question...

Since 1956, when the Final Four competitors came from four different regionals, what region has produced the most national champions?

Answer...

The West/Far West with 18, next are the Midwest with 13; the South/Southeast/Mideast, 10; and the East, six. Remember that any team, regardless of its geographical location, can play in any region to best balance the bracket in the committee's judgment.

G	S	Yr.	Round	City	Facility	Built	Capacity
SOUTH CAROLINA							
4	2	1970	E Rgnl	Columbia	Carolina Coliseum	1968	12,401
TENNESSEE							
2	1	1972	ME 1st	Knoxville	Stokely Athletics Center	1966	12,700
2	1	1978	ME 1st	"	"	"	"
3	2	1983	ME Rgnl	"	"	"	"
6	3	1990	SE 1st-2d	"	Thompson-Boling Arena	1987	24,535
3	2	1994	SE Rgnl	"	"	"	23,291
3	2	1999	South Rgnl	"	"	"	24,385
4	2	1984	MW 1st-2d	Memphis	#Mid-South Coliseum	1975	11,200
6	3	1995	SE 1st-2d	"	The Pyramid	1991	20,142
6	3	1997	SE 1st-2d	"	"	"	"
6	3	2001	South 1st-2d	"	"	"	"
4	2	1979	ME 1st-2d	Murfreesboro	Murphy Athletic Center	1972	11,520
4	2	1973	ME Rgnl	Nashville	Memorial Gymnasium	1952	15,626
4	2	1982	ME 1st-2d	"	"	"	"
6	3	1989	SE 1st-2d	"	"	"	"
6	3	1993	SE 1st-2d	"	"	"	"
6	3	2000	S 1st-2d	"	#Gaylord Entertainment Center	1996	17,297
TEXAS							
4	2	1981	MW 1st-2d	Austin	Frank Erwin Center	1977	16,231
6	3	1990	MW 1st-2d	"	"	"	"
6	3	1995	MW 1st-2d	"	"	"	16,042
3	2	2000	S Rgnl	"	"	"	16,731
4	2	1957	MW Rgnl	Dallas	Moody Coliseum	1956	9,007
2	1	1962	MW 1st	"	"	"	"
2	1	1964	MW 1st	"	"	"	"
2	1	1979	MW 2d	"	"	"	"
4	2	1982	MW 1st-2d	"	#Reunion Arena	1980	17,000
3	2	1985	MW Rgnl	"	"	"	"
3	2	1986	Final Four	"	"	"	"
6	3	1989	MW 1st-2d	"	"	"	"
3	2	1990	MW Rgnl	"	"	"	"
3	2	1994	MW Rgnl	"	"	"	16,240
6	3	1996	MW 1st-2d	"	"	"	16,379
2	1	1974	MW 1st	Denton	North Texas Coliseum	1973	10,000
2	1	1976	MW 1st	"	"	"	"
4	2	1980	MW 1st-2d	"	"	"	"
4	2	1981	W 1st-2d	El Paso	Special Events Center	1977	12,000
2	1	1969	MW 1st	Fort Worth	Daniel-Meyer Coliseum	1961	7,166
2	1	1970	MW 1st	"	"	"	"
4	2	1971	Final Four	Houston	#Astrodome	1965	31,765
1	1	1961	MW 1st	"	Delmar Field House	1960	5,300
2	1	1971	MW 1st	"	Hofheinz Pavilion	1969	10,066
4	2	1973	MW Rgnl	"	"	"	"
6	3	1985	MW 1st-2d	"	"	"	"
3	2	1980	MW Rgnl	"	#Summit	1975	16,016
4	2	1983	MW 1st-2d	"	"	"	"
3	2	1986	W Rgnl	"	"	"	"
2	1	1963	MW 1st	Lubbock	Lubbock Memorial Coliseum	1956	8,174
2	1	1965	MW 1st	"	"	"	"
4	2	1966	MW Rgnl	"	"	"	"
2	1	1975	MW 1st	"	"	"	"
3	2	1997	MW Rgnl	San Antonio	#Alamodome	1993	41,250
3	2	1998	Final Four	"	"	"	40,509
3	2	2001	MW Rgnl	"	"	"	"
UTAH							
2	1	1971	W 1st	Logan	Dee Glen Smith Spectrum	1970	10,270
2	1	1973	W 1st	"	"	"	"
4	2	1982	W 1st-2d	"	"	"	"
4	2	1980	W 1st-2d	Ogden	Dee Event Center	1977	11,592
3	2	1983	W Rgnl	"	"	"	"
6	3	1986	W 1st-2d	"	"	"	"
6	3	1994	W 1st-2d	"	"	"	"
1	1	1960	W 1st	Provo	George Albert Smith Field House	1951	10,500
4	2	1962	W Rgnl	"	"	"	"
4	2	1963	W Rgnl	"	"	"	"
4	2	1965	W Rgnl	"	"	"	"
2	1	1970	W 1st	"	"	"	"
4	2	1972	W Rgnl	"	Marriott Center	1971	22,700
3	2	1977	W Rgnl	"	"	"	"
3	2	1979	W Rgnl	"	"	"	"
3	2	1982	W Rgnl	"	"	"	"
2	1	1968	MW,W 1st	Salt Lake City	Nielsen Field House	1940	5,000
4	2	1971	W Rgnl	"	Special Events Center	1969	15,000
4	2	1979	Final Four	"	"	"	"
3	2	1981	W Rgnl	"	"	"	"
4	2	1984	W 1st-2d	"	"	"	"
6	3	1985	W 1st-2d	"	"	"	"
6	3	1987	W 1st-2d	"	"	"	"
6	3	1988	W 1st-2d	"	Jon M. Huntsman Center (name change)	"	"
6	3	1990	W 1st-2d	"	"	"	"
6	3	1991	W 1st-2d	"	"	"	"
6	3	1993	W 1st-2d	"	"	"	"
6	3	1995	W 1st-2d	"	"	"	14,910
6	3	1997	W 1st-2d	"	"	"	14,925
6	3	2000	W 1st-2d	"	"	"	"



Photo from Duke sports information

Four-year starter Jay Bilas was a key part of the 1986 Duke team that won a record 37 games and advanced to the title game at Reunion Arena in Dallas.

Question...

Including this season, Atlanta has hosted the Final Four twice – at the Omni in 1977 and at the Georgia Dome in 2002. Five other cities have used two different facilities to host the Final Four. What are those cities?

Answer...

Evanston (Illinois), Indianapolis, Kansas City (Missouri), Minneapolis and Seattle



File photo

In the first Final Four in the Kingdome in Seattle in 1984, Patrick Ewing led Georgetown over Akeem Olajuwon and Houston, 84-75, in the championship game.

G	S	Yr.	Round	City	Facility	Built	Capacity
VIRGINIA							
2	1	1966	E 1st	Blacksburg	Cassell Coliseum	1964	10,000
2	1	1967	W 1st	"	"	"	"
6	3	1990	SE 1st-2d	Richmond	#Richmond Coliseum	1971	11,051
6	3	1996	E 1st-2d	"	"	"	11,859
1	1	1972	E 1st	Williamsburg	William and Mary Hall	1970	10,070
1	1	1973	E 1st	"	"	"	"
WASHINGTON							
2	1	1975	W 1st	Pullman	Wallis Beasley Performing Arts Coliseum	1973	12,058
4	2	1982	W 1st-2d	"	"	"	"
4	2	1984	W 1st-2d	"	"	"	"
2	1	1949	CH-3d	Seattle	Edmundson Pavilion	1927	9,000
4	2	1952	Final Four	"	"	"	"
1	1	1953	W-2 1st	"	"	"	"
1	1	1956	FW 1st	"	"	"	"
4	2	1960	W Rgnl	"	"	"	"
4	2	1970	W Rgnl	"	"	"	"
6	3	1999	W 1st-2d	"	#Key Arena	1995	14,643
3	2	1984	Final Four	"	#Kingdome	1976	38,471
3	2	1987	W Rgnl	"	"	"	"
3	2	1988	W Rgnl	"	"	"	"
3	2	1989	Final Four	"	"	"	"
3	2	1991	W Rgnl	"	"	"	"
3	2	1993	W Rgnl	"	"	"	"
3	2	1995	Final Four	"	"	"	38,540
WEST VIRGINIA							
1	1	1971	E 1st	Morgantown	WVU Coliseum	1970	14,000
4	2	1972	E Rgnl	"	"	"	"
1	1	1974	E 1st	"	"	"	"
WISCONSIN							
4	2	1941	En Rgnl	Madison	Wisconsin Field House	1927	14,000
4	2	1969	ME Rgnl	"	"	"	13,000
4	2	1984	ME 1st-2d	Milwaukee	#Milwaukee Exposition & Convention Center	1950	11,052
6	3	1992	MW 1st-2d	"	#Bradley Center	1988	18,600
6	3	1996	MW Rgnl	"	"	"	"
6	3	1999	MW 1st-2d	"	"	"	"

G — Number of games.
 S — Number of sessions.
 CH — National championship game.
 3d — National third-place game.
 Rgnl — Regional.
 2d — Second round.
 1st — First round.
 OR — Opening round.
 East — East region.
 En — Eastern region.
 E-1 — East-1 region.
 E-2 — East-2 region.

FW — Far West region.
 ME — Midwest region.
 MW — Midwest region.
 S — South region.
 SE — Southeast region.
 W — West region.
 Wn — Western region.
 W-1 — West-1 region.
 W-2 — West-2 region.
 TH — Tripleheader.
 # — Non-campus arena.

Future Dates and Sites

Tournament

Year	First Round	Second Round	Regionals	Final Four
2002	March 14-15	March 16-17	March 21-24	March 30 and April 1
2003	March 20-21	March 22-23	March 27-30	April 5 and 7
2004	March 18-19	March 20-21	March 25-28	April 3 and 5
2005	March 17-18	March 19-20	March 24-27	April 2 and 4
2006	March 16-17	March 18-19	March 23-26	April 1 and 3
2007	March 15-16	March 17-18	March 22-25	March 31 and April 2

Final Four

Year	Dates	Site & Hosts
2002	March 30 and April 1	Georgia Dome, Atlanta Host: Georgia Institute of Technology
2003	April 5 and 7	Louisiana Superdome, New Orleans Co-hosts: Sun Belt Conference and University of New Orleans
2004	April 3 and 5	Alamodome, San Antonio Host: University of Texas at San Antonio
2005	April 2 and 4	Trans World Dome, St. Louis Host: Missouri Valley Conference
2006	April 1 and 3	RCA Dome, Indianapolis Co-hosts: Midwestern Collegiate Conference and Butler University
2007	March 31 and April 2	Georgia Dome, Atlanta Host: Georgia Institute of Technology

National Semifinal Pairings

2002, 2005, 2008 — East vs. Midwest; South vs. West
 2003, 2006, 2009 — East vs. South; West vs. Midwest
 2004, 2007, 2010 — East vs. West; Midwest vs. South

2002

OPENING ROUND

MARCH 12

— University of Dayton Arena, Ohio
 Host: University of Dayton

FIRST AND SECOND ROUND

MARCH 14 AND 16

— University Arena, Albuquerque, New Mexico
 Host: University of New Mexico

— BLO Center, Greenville, South Carolina
 Co-hosts: Southern Conference and Furman University

— ARCO Arena, Sacramento, California
 Host: University of the Pacific

— Trans World Dome, St. Louis
 Host: Missouri Valley Conference

MARCH 15 AND 17

— United Center, Chicago
 Host: Big Ten Conference

— American Airlines Arena, Dallas
 Host: Big 12 Conference

- Mellon Arena, Pittsburgh
Host: Duquesne University
- MCI Center, Washington, D.C.
Host: Georgetown University

REGIONALS

MARCH 21 AND 23

- SOUTH — Rupp Arena, Lexington, Kentucky
Host: University of Kentucky

- WEST — Compaq Center, San Jose, California
Host: Santa Clara University

MARCH 22 AND 24

- EAST — Carrier Dome, Syracuse, New York
Host: Syracuse University

- MIDWEST — Kohl Center, Madison, Wisconsin
Host: University of Wisconsin-Madison

2003

FIRST AND SECOND ROUND

MARCH 20 AND 22

- RCA Dome, Indianapolis
Co-hosts: Butler University and Horizon League
- The Myriad, Oklahoma City
Host: University of Oklahoma
- Jon M. Huntsman Center, Salt Lake City
Host: University of Utah
- Spokane Arena, Spokane, Washington
Host: Washington State University

MARCH 21 AND 23

- Birmingham-Jefferson Civic Center, Birmingham, Alabama
Host: Southeastern Conference
- FleetCenter, Boston
Host: Boston College
- Gaylord Entertainment Center, Nashville, Tennessee
Host: Vanderbilt University
- Ice Palace Arena, Tampa, Florida
Host: University of South Florida

REGIONALS

MARCH 27 AND 29

- MIDWEST — Hubert H. Humphrey Metrodome, Minneapolis
Host: University of Minnesota-Twin Cities

- WEST — Arrowhead Pond of Anaheim, Anaheim, California
Host: Big West Conference

MARCH 28 AND 30

- EAST — Pepsi Arena, Albany, New York
Co-hosts: Metro Atlantic Athletic Conference and Siena College

- MIDWEST — Alamodome, San Antonio
Host: University of Texas at San Antonio

2004

FIRST AND SECOND ROUND

MARCH 18 AND 20

- HSBC, Buffalo, New York
Co-hosts: Canisius College and Niagara University
- Pepsi Center, Denver
Co-hosts: Colorado State University and Mountain West Conference
- Raleigh Entertainment & Sports Arena, Raleigh, North Carolina
Host: North Carolina State University
- Key Arena, Seattle
Host: University of Washington

MARCH 19 AND 21

- Nationwide Arena, Columbus, Ohio
Host: Ohio State University
- Kemper Arena, Kansas City, Missouri
Host: Big 12 Conference
- Bradley Center, Milwaukee
Host: Marquette University
- T.D. Waterhouse Center, Orlando, Florida
Host: Stetson University

REGIONALS

MARCH 25 AND 27

- EAST — Continental Airlines Arena, East Rutherford, New Jersey
Host: Rutgers University

- WEST — America West Arena, Phoenix
Host: Arizona State University

MARCH 26 AND 28

- SOUTH — Georgia Dome, Atlanta
Host: Georgia Tech

- MIDWEST — Trans World Dome, St. Louis
Host: Missouri Valley Conference

Tournament Moments...

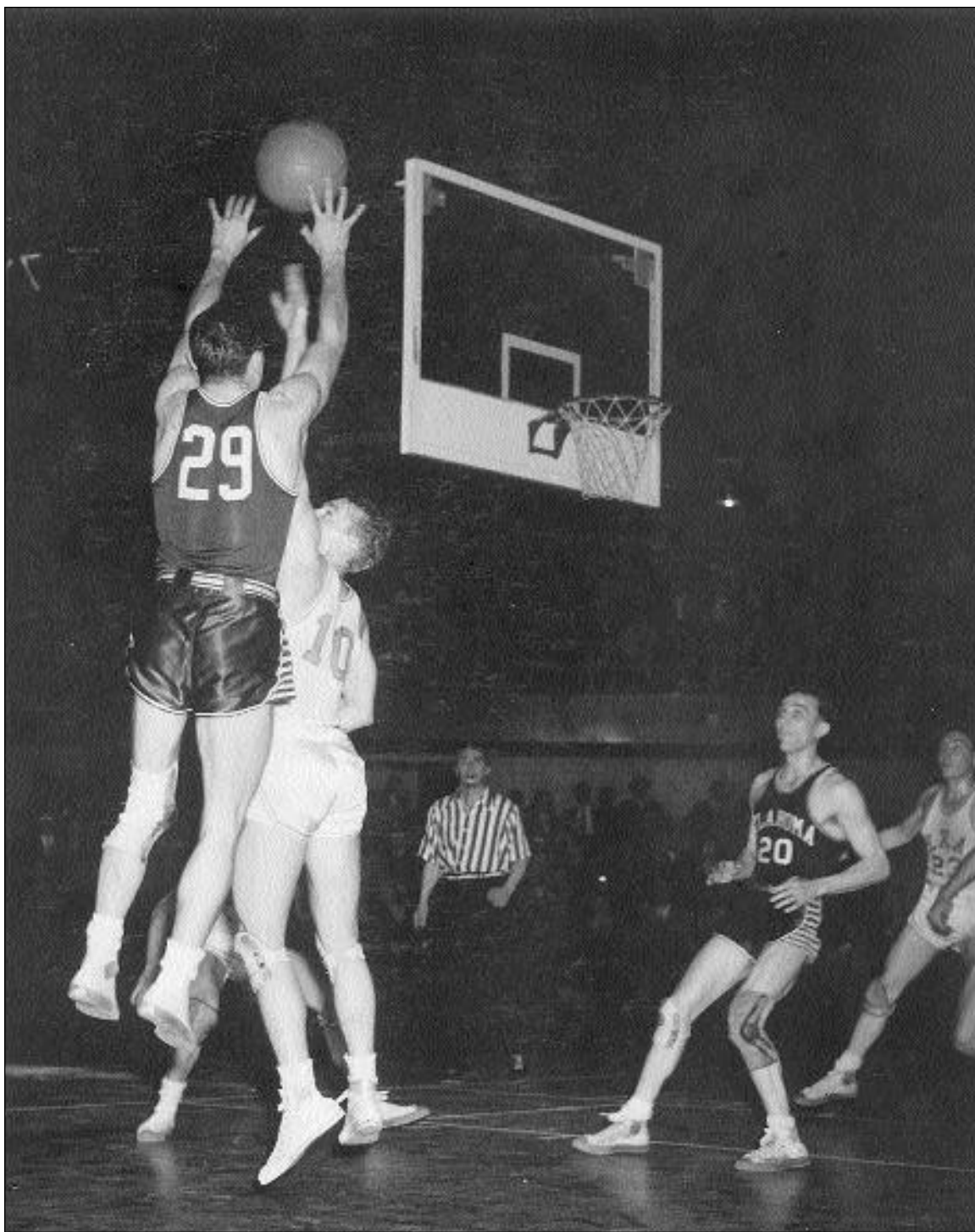


Photo from Oklahoma sports information

March 22, 1947, Western regional final in the Municipal Auditorium in Kansas City, Missouri – Down a point with seven seconds remaining, Oklahoma advanced to the NCAA title game as substitute guard Ken Pryor sank a two-handed jumper to give the Sooners a 55-54 victory over Texas.