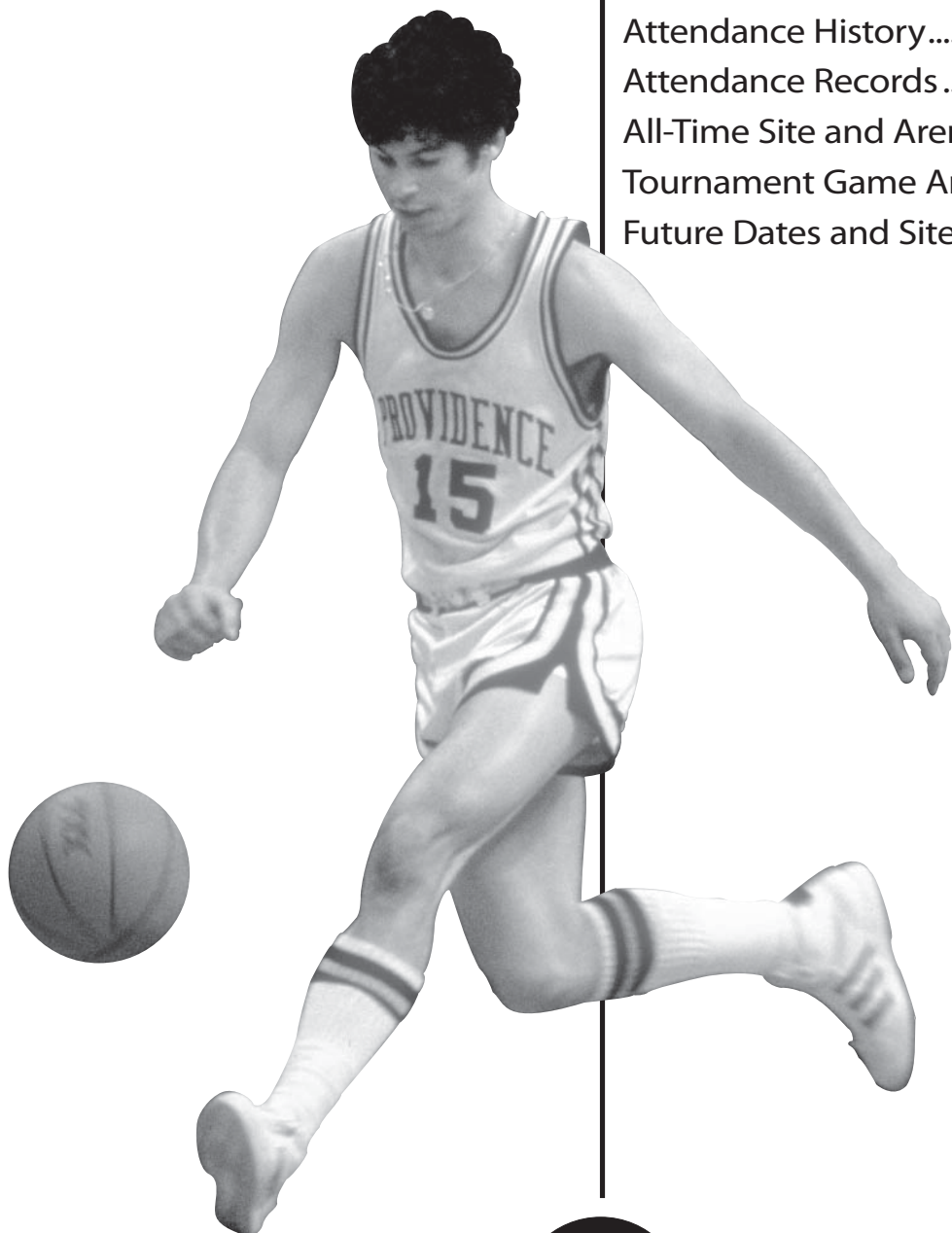


Attendance and Sites

Attendance History.....	2
Attendance Records.....	4
All-Time Site and Arena History.....	5
Tournament Game Arenas By Site.....	6
Future Dates and Sites.....	16



Attendance History

By Tournament

Year	Final Date	Final Crowd	*Total Atten.	Sess.	Avg. Atten.	Final Site	Final Facility	No. of Teams
1939	3-27	5,500	15,025	5	3,005	Evanston, IL	Patten Gymnasium	8
1940	3-30	10,000	36,880	5	7,376	Kansas City, MO	Municipal Auditorium	8
1941	3-29	7,219	48,055	5	9,611	Kansas City, MO	Municipal Auditorium	8
1942	3-28	6,500	24,372	5	4,874	Kansas City, MO	Municipal Auditorium	8
1943	3-30	13,300	56,876	5	11,375	New York	Madison Square Garden	8
1944	3-28	15,000	59,369	5	11,874	New York	Madison Square Garden	8
1945	3-27	18,035	67,780	5	13,556	New York	Madison Square Garden	8
1946	3-26	18,479	73,116	5	14,623	New York	Madison Square Garden	8
1947	3-25	18,445	72,959	5	14,592	New York	Madison Square Garden	8
1948	3-23	16,174	72,523	5	14,505	New York	Madison Square Garden	8
1949	3-26	10,600	66,077	5	13,215	Seattle	Edmundson Pavilion	8
1950	3-28	18,142	75,464	5	15,093	New York	Madison Square Garden	8
1951	3-27	15,348	110,645	9	12,294	Minneapolis	Williams Arena	16
1952	3-26	10,700	115,712	10	11,571	Seattle	Edmundson Pavilion	16
1953	3-18	10,500	127,149	14	9,082	Kansas City, MO	Municipal Auditorium	22
1954	3-20	10,500	115,391	15	7,693	Kansas City, MO	Municipal Auditorium	24
1955	3-19	10,500	116,983	15	7,799	Kansas City, MO	Municipal Auditorium	24
1956	3-23	10,600	132,513	15	8,834	Evanston, IL	McGaw Hall	25
1957	3-23	10,500	108,891	14	7,778	Kansas City, MO	Municipal Auditorium	23
1958	3-22	18,803	176,878	14	12,634	Louisville, KY	Freedom Hall	24
1959	3-21	18,498	161,809	14	11,558	Louisville, KY	Freedom Hall	23
1960	3-19	14,500	155,491	16	9,718	San Francisco	Cow Palace	25
1961	3-25	10,700	169,520	14	12,109	Kansas City, MO	Municipal Auditorium	24
1962	3-24	18,469	177,469	14	12,676	Louisville, KY	Freedom Hall	25
1963	3-23	19,153	153,065	14	10,933	Louisville, KY	Freedom Hall	25
1964	3-21	10,864	140,790	14	10,056	Kansas City, MO	Municipal Auditorium	25
1965	3-20	13,204	140,673	13	10,821	Portland, OR	Memorial Coliseum	23
1966	3-19	14,253	140,925	13	10,840	College Park, MD	Cole Field House	22
1967	3-25	18,892	159,570	14	11,398	Louisville, KY	Freedom Hall	23
1968	3-23	14,438	160,888	14	11,492	Los Angeles	Sports Arena	23
1969	3-22	18,669	165,712	15	11,047	Louisville, KY	Freedom Hall	25
1970	3-21	14,380	146,794	16	9,175	College Park, MD	Cole Field House	25
1971	3-27	31,765	207,200	16	12,950	Houston	Astrodome	25
1972	3-25	15,063	147,304	16	9,207	Los Angeles	Sports Arena	25
1973	3-26	19,301	163,160	16	10,198	St. Louis	St. Louis Arena	25
1974	3-25	15,742	154,112	16	9,632	Greensboro, NC	Greensboro Coliseum	25
1975	3-31	15,151	183,857	18	10,214	San Diego	Sports Arena	32
1976	3-29	17,540	202,502	18	11,250	Philadelphia	Spectrum	32
1977	3-28	16,086	241,610	18	13,423	Atlanta	Omni	32
1978	3-27	18,721	227,149	18	12,619	St. Louis	Checkerdome	32
1979	3-26	15,410	262,101	22	11,914	Salt Lake City	Special Events Center	40
1980	3-24	16,637	321,260	26	12,356	Indianapolis	Market Square Arena	48
1981	3-30	18,276	347,414	26	13,362	Philadelphia	Spectrum	48
1982	3-29	61,612	427,251	26	16,433	New Orleans	Louisiana Superdome	48
1983	4-4	17,327	364,356	28	13,013	Albuquerque, NM	U. of New Mexico Pit	52
1984	4-2	38,471	397,481	28	14,196	Seattle	Kingdome	53
1985	4-1	23,124	422,519	34	12,427	Lexington, KY	Rupp Arena	64
1986	3-31	16,493	499,704	34	14,697	Dallas	Reunion Arena	64
1987	3-30	64,959	654,744	34	19,257	New Orleans	Louisiana Superdome	64
1988	4-4	16,392	558,998	34	16,441	Kansas City, MO	Kemper Arena	64
1989	4-3	39,187	613,242	34	18,037	Seattle	Kingdome	64
1990	4-2	17,765	537,138	34	15,798	Denver	McNichols Arena	64
1991	4-1	47,100	665,707	34	19,580	Indianapolis	RCA Dome	64
1992	4-6	50,379	580,462	34	17,072	Minneapolis	Humphrey Metrodome	64
1993	4-5	64,151	707,719	34	20,815	New Orleans	Louisiana Superdome	64
1994	4-4	23,674	578,007	34	17,000	Charlotte, NC	Charlotte Coliseum	64
1995	4-3	38,540	540,101	34	15,885	Seattle	Kingdome	64
1996	4-1	19,229	631,834	34	18,583	East Rutherford, NJ	Continental Airlines Arena	64
1997	3-31	47,028	646,531	34	19,016	Indianapolis	RCA Dome	64
1998	3-30	40,509	663,876	34	19,526	San Antonio	Alamodome	64
1999	3-29	41,340	720,685	34	21,197	St. Petersburg, FL	Tropicana Field	64
2000	4-3	43,116	624,777	34	18,375	Indianapolis	RCA Dome	64
2001	4-2	45,994	612,089	35	17,488	Minneapolis	Humphrey Metrodome	65
2002	4-1	52,647	720,433	35	20,584	Atlanta	Georgia Dome	65
2003	4-7	54,524	715,080	35	20,431	New Orleans	Louisiana Superdome	65
2004	4-5	44,468	716,899	35	20,483	San Antonio	Alamodome	65
2005	4-4	47,262	689,317	35	19,695	St. Louis	Edward Jones Dome	65
2006	4-3	43,168	670,254	35	19,150	Indianapolis	RCA Dome	65
2007	4-2	51,458	696,992	35	19,914	Atlanta	Georgia Dome	65
2008	4-7	43,257	763,607	35	21,817	San Antonio	Alamodome	65
2009	4-6	72,922	708,296	35	20,237	Detroit	Ford Field	65
2010	4-5	70,930	706,246	35	20,178	Indianapolis	Lucas Oil Stadium	65
2011	4-4	70,376	690,679	36	19,186	Houston	Reliant Stadium	68
2012	4-2	70,913	717,185	36	19,922	New Orleans	Mercedes-Benz Superdome	68
2013	4-8					Atlanta	Georgia Dome	
2014	4-7					Arlington, TX	Cowboys Stadium	

Year	Final Date	Final Crowd	*Total Atten.	Sess.	Avg. Atten.	Final Site	Final Facility	No. of Teams
2015	4-6					Indianapolis	Lucas Oil Stadium	
2016	4-4					Houston	Reliant Stadium	

Years	Championship Game...			Tournament History...		
	Final Session	*Total Atten.	Avg. Atten.	All Sessions	*Total Atten.	*Avg. Atten.
1939-49	11	139,252	12,659	55	593,032	10,782
1950-59	10	134,091	13,409	125	1,241,435	9,931
1960-69	10	153,142	15,314	141	1,564,103	11,093
1970-79	10	179,159	17,916	174	1,935,789	11,125
1980-89	10	312,478	31,248	304	4,606,969	15,155
1990-99	10	389,715	38,972	340	6,272,060	18,447
2000-09	10	498,724	49,872	349	6,917,744	19,822
2010-12	3	212,219	70,740	107	2,114,110	19,758
All Time	74	2,018,780	27,281	1,595	25,245,242	15,828

*Total attendance: 1939-69; paid attendance off of box scores: 1970-present.

Capacity Percentages for Preliminary-Round Games

1st-2d-3d Round			Regionals			Non-Dome Total			Preliminary-Round Total			
Capacity	Sold	Pct.	Capacity	Sold	Pct.	Capacity	Sold	Pct.	Capacity	Sold	Pct.	
1989.....	425,625	359,064	84.4	186,834	176,390	94.4	421,734	357,653	84.8	612,459	535,454	87.4
1990.....	451,818	370,362	82.0	141,000	133,383	94.6	431,093	365,208	84.7	592,818	503,745	85.0
1991.....	449,275	379,708	84.5	234,666	191,759	81.7	357,375	336,994	94.3	683,941	571,467	83.7
1992.....	356,354	334,644	93.9	145,598	145,352	99.8	501,952	479,996	95.6	501,952	479,996	95.6
1993.....	495,390	415,274	83.8	181,400	168,141	92.7	399,290	375,443	94.0	676,790	583,415	86.2
1994.....	403,941	395,092	97.8	140,036	137,623	98.3	467,477	457,846	97.9	543,977	532,715	97.9
1995.....	339,921	329,521	96.9	134,520	133,658	99.4	474,441	463,179	97.6	474,441	463,179	97.6
1996.....	440,491	389,453	88.4	215,374	203,921	94.7	396,604	372,669	94.0	655,865	593,374	90.5
1997.....	419,198	359,994	85.9	217,000	192,553	88.7	489,098	429,765	87.9	636,198	552,547	86.9
1998.....	431,050	377,075	87.5	204,900	204,365	99.7	475,250	448,033	94.3	635,950	581,440	91.4
1999.....	486,603	428,373	88.0	208,114	207,456	99.7	450,817	426,988	94.7	694,717	635,829	91.5
2000.....	403,152	375,949	93.9	168,318	164,318	97.6	433,260	413,561	95.5	571,470	540,199	94.5
2001.....	396,150	317,827	80.2	216,500	184,546	85.2	412,650	359,392	87.1	612,650	502,373	82.0
2002.....	458,637	437,267	95.3	176,090	169,292	96.1	481,117	475,602	98.9	634,727	606,561	95.6
2003.....	456,963	412,499	90.3	205,178	175,055	85.3	417,141	408,765	98.0	662,141	587,554	88.7
2004.....	434,198	422,560	97.3	195,267	181,197	92.8	509,465	497,245	97.6	629,465	603,757	95.9
2005.....	458,949	435,173	94.8	161,528	159,128	98.5	444,172	438,834	98.8	620,477	594,301	95.8
2006.....	405,153	398,739	98.4	197,166	176,174	89.4	482,319	476,725	98.8	602,319	574,913	95.4
2007.....	413,860	401,248	97.0	195,465	180,011	92.1	489,325	464,099	94.8	609,325	581,259	95.4
2008.....	436,541	402,554	92.2	246,032	249,358	101.4	508,573	471,632	92.7	682,573	651,912	95.5
2009.....	452,856	368,409	81.6	217,106	172,981	79.7	436,520	395,814	90.7	669,962	542,390	81.0
2010.....	373,023	332,585	89.2	250,610	223,512	89.2	411,023	370,630	90.2	623,633	556,097	89.2
2011.....	479,709	419,191	87.4	139,802	107,801	77.1	574,251	498,127	86.7	619,511	526,992	85.1
2012.....	479,316	419,155	87.4	176,409	168,096	95.3	554,633	490,376	88.4	655,725	587,251	89.6

Attendance Records

Note: Figures are paid attendance. For Final Four games, media are included.

HIGHEST TOTAL FOR TOURNAMENT

763,607—2008 (35 sessions)
720,685—1999 (34)
720,433—2002 (35)
717,185—2012 (36)
716,899—2004 (35)
715,080—2003 (35)
708,296—2009 (35)
707,719—1993 (34)
706,246—2010 (35)
696,992—2007 (35)

HIGHEST AVERAGE PER GAME OR SESSION FOR TOURNAMENT

21,817—2008 (763,607 in 35 sessions)
21,197—1999 (720,685 in 34)
20,815—1993 (707,719 in 34)
20,584—2002 (720,433 in 35)
20,483—2004 (716,899 in 35)
20,431—2003 (715,080 in 35)
20,237—2009 (708,296 in 35)
20,178—2010 (706,246 in 35)
19,922—2012 (717,185 in 36)
19,914—2007 (696,992 in 35)

HIGHEST GAME OR SESSION—TOURNAMENT

75,421—Reliant Stadium, Houston, NSF, Butler (70) vs. VCU (62) and Connecticut (56) vs. Kentucky (55), 4-2-2011; CH, Connecticut (53) vs. Butler (41), 4-4-2011 (70,376 in CH)
73,361—Mercedes-Benz Superdome, New Orleans, NSF, Kansas (64) vs. Ohio St. (62) and Kentucky (69) vs. Louisville (61), 3-31-2012; CH, Kentucky (67) vs. Kansas (59), 4-2-2012 (70,913 in CH)
72,922—Ford Field, Detroit, CH, North Carolina (89) vs. Michigan St. (72), 4-6-2009; NSF, North Carolina (83) vs. Villanova (69) and Michigan St. (82) vs. Connecticut (73), 4-4-2009 (72,456 in NSF)
71,298—Lucas Oil Stadium, Indianapolis, NSF, Butler (52) vs. Michigan St. (50) and Duke (78) vs. West Virginia (57), 4-3-2010; CH, Duke (61) vs. Butler (59), 4-5-2010 (70,930 in CH)
64,959—Louisiana Superdome, New Orleans, CH, Indiana (74) vs. Syracuse (73), 3-30-1987; NSF, Indiana (97) vs. UNLV (93) and Syracuse (77) vs. Providence (63), 3-28-1987
64,151—Louisiana Superdome, New Orleans, CH, North Carolina (77) vs. Michigan (71), 4-5-1993; NSF, North Carolina (78) vs. Kansas (68) and Michigan (81) vs. Kentucky (78) (ot), 4-3-1993
61,612—Louisiana Superdome, New Orleans, CH, North Carolina (63) vs. Georgetown (62), 3-29-1982; NSF, North Carolina (68) vs. Houston (63) and Georgetown (50) vs. Louisville (46), 3-27-1982
57,563—Ford Field, Detroit, RF, Kansas (59) vs. Davidson (57), 3-30-2008 (57,028 in RSF)
54,524—Louisiana Superdome, New Orleans, CH, Syracuse (81) vs. Kansas (78), 4-7-2003 (54,432 in NSF)
53,510—Georgia Dome, Atlanta, NSF, Ohio St. (67) vs. Georgetown (60) and Florida (76) vs. UCLA (63), 3-31-2007 (51,458 in CH)

HIGHEST SINGLE GAME—NATIONAL CHAMPIONSHIP

72,922—Ford Field, Detroit, North Carolina (89) vs. Michigan St. (72), 4-6-2009
70,930—Lucas Oil Stadium, Indianapolis, Duke (61) vs. Butler (59), 4-5-2010
70,913—Mercedes-Benz Superdome, New Orleans, Kentucky (67) vs. Kansas (59), 4-2-2012
70,376—Reliant Stadium, Houston, Connecticut (53) vs. Butler (41), 4-4-2011
64,959—Louisiana Superdome, New Orleans, Indiana (74) vs. Syracuse (73), 3-30-1987

HIGHEST SINGLE SESSION—NATIONAL SEMIFINALS

75,421—Reliant Stadium, Houston, Butler (70) vs. VCU (62) and Connecticut (56) vs. Kentucky (55), 4-2-2011
73,361—Mercedes-Benz Superdome, New Orleans, Kansas (64) vs. Ohio St. (62) and Kentucky (69) vs. Louisville (61), 3-31-2012
72,456—Ford Field, Detroit, North Carolina (83) vs. Villanova (69) and Michigan St. (82) vs. Connecticut (73), 4-4-2009
71,298—Lucas Oil Stadium, Indianapolis, Butler (52) vs. Michigan St. (50) and Duke (78) vs. West Virginia (57), 4-3-2010
64,959—Louisiana Superdome, New Orleans, Indiana (97) vs. UNLV (93) and Syracuse (77) vs. Providence (63), 3-28-1987

HIGHEST SINGLE GAME—REGIONAL FINAL

57,563—Ford Field, Detroit, Kansas (59) vs. Davidson (57), 3-30-2008
47,492—Reliant Stadium, Houston, Duke (78) vs. Baylor (71), 3-28-2010
42,519—Trans World Dome, St. Louis, Michigan St. (73) vs. Kentucky (66), 3-21-1999
40,589—Tropicana Field, St. Petersburg, FL, Kentucky (86) vs. Duke (84), 3-22-1998
36,084—Lucas Oil Stadium, Indianapolis, Michigan St. (64) vs. Louisville (52), 3-29-2009

HIGHEST SINGLE SESSION—REGIONAL SEMIFINALS

57,028—Ford Field, Detroit, Davidson (73) vs. Wisconsin (56) and Kansas (72) vs. Villanova (57), 3-28-2008
45,505—Reliant Stadium, Houston, Duke (70) vs. Purdue (57) and Baylor (72) vs. St. Mary's (CA) (49), 3-26-2010
42,440—Trans World Dome, St. Louis, Michigan St. (54) vs. Oklahoma (46) and Kentucky (58) vs. Miami (OH) (43), 3-19-1999
40,589—Tropicana Field, St. Petersburg, FL, Kentucky (96) vs. UCLA (68) and Duke (80) vs. Syracuse (67), 3-20-1998
34,614—Georgia Dome, Atlanta, Massachusetts (79) vs. Arkansas (63) and Georgetown (98) vs. Texas Tech (90), 3-21-1996

HIGHEST SINGLE SESSION—THIRD ROUND

21,757—KCF Yum! Center, Louisville, KY, Marquette (62) vs. Murray St. (53) and Kentucky (87) vs. Iowa St. (71), 3-17-2012
20,164—Quicken Loans Arena, Cleveland, Ohio St. (98) vs. George Mason (66) and Marquette (66) vs. Syracuse (62), 3-20-2011
19,328—Pepsi Center, Denver, Richmond (65) vs. Morehead St. (48) and BYU (89) vs. Gonzaga (67), 3-19-2011
18,722—Greensboro Coliseum, Greensboro, NC, Xavier (70) vs. Lehigh (58) and North Carolina (87) vs. Creighton (73), 3-18-2012
18,684—Verizon Center, Washington, D.C., Connecticut (69) vs. Cincinnati (58) and Butler (71) vs. Pittsburgh (70), 3-19-2011

HIGHEST SINGLE SESSION—SECOND ROUND

40,331—RCA Dome, Indianapolis, Illinois (71) vs. Nevada (59) and Kentucky (69) vs. Cincinnati (60), 3-19-2005
37,842—RCA Dome, Indianapolis, Texas (73) vs. Purdue (72) and Xavier (74) vs. Georgetown (71), 3-18-1990
37,444—RCA Dome, Indianapolis, Illinois (72) vs. Ball St. (60) and Louisville (93) vs. Arkansas (84), 3-18-1989
37,411—RCA Dome, Indianapolis, Louisville (78) vs. Oklahoma St. (63) and Indiana (107) vs. Xavier (70), 3-20-1993
34,576—RCA Dome, Indianapolis, Duke (65) vs. Xavier (60) and Indiana (107) vs. Auburn (90), 3-14-1987

HIGHEST SINGLE SESSION—FIRST ROUND

39,940—RCA Dome, Indianapolis (2d session), Texas (100) vs. Georgia (88) and Purdue (75) vs. La-Monroe (63), 3-16-1990 (39,417 in 1st session)
38,387—RCA Dome, Indianapolis (2d session), Xavier (73) vs. New Orleans (55) and Indiana (97) vs. Wright St. (54), 3-19-1993 (38,343 in 1st session)
36,823—RCA Dome, Indianapolis (2d session), Illinois (77) vs. McNeese St. (71) and Ball St. (68) vs. Pittsburgh (64), 3-16-1989 (36,705 in 1st session)
31,569—RCA Dome, Indianapolis (2d session), Mississippi St. (58) vs. VCU (51) and Princeton (43) vs. UCLA (41), 3-14-1996 (31,373 in 1st session)
27,959—RCA Dome, Indianapolis (2d session), Ohio St. (72) vs. Murray St. (58) and Detroit (56) vs. UCLA (53), 3-11-1999 (27,184 in 1st session)

HIGHEST SINGLE SESSION—OPENING ROUND

11,346—University of Dayton Arena, Dayton, OH, Morehead St. (58) vs. Alabama St. (43), 3-17-2009
8,681—University of Dayton Arena, Dayton, OH, Siena (81) vs. Alcorn St. (77), 3-12-2002
8,464—University of Dayton Arena, Dayton, OH, Mt. St. Mary's (69) vs. Coppin St. (60), 3-18-2008
8,257—University of Dayton Arena, Dayton, OH, Niagara (77) vs. Florida A&M (69), 3-13-2007
8,254—University of Dayton Arena, Dayton, OH, Oakland (79) vs. Alabama A&M (69), 3-15-2005

HIGHEST TWO-SESSION SERIES—FINAL FOUR

145,797—Reliant Stadium, Houston, 4-2 & 4-4-2011
145,378—Ford Field, Detroit, 4-4 & 4-6-2009
144,274—Mercedes-Benz Superdome, New Orleans, 3-31 & 4-2-2012
142,228—Lucas Oil Stadium, Indianapolis, 4-3 & 4-5-2010
129,918—Louisiana Superdome, New Orleans, 3-28 & 3-30-1987

HIGHEST TWO-SESSION SERIES—REGIONAL

114,591—Ford Field, Detroit, 3-28 & 3-30-2008
92,997—Reliant Stadium, Houston, 3-26 & 3-28-2010
84,959—Trans World Dome, St. Louis, 3-19 & 3-21-1999
81,178—Tropicana Field, St. Petersburg, FL, 3-20 & 3-22-1998
69,864—Lucas Oil Stadium, Indianapolis, 3-27 & 3-29-2009

HIGHEST THREE-SESSION SERIES—SECOND AND THIRD ROUNDS

117,199—RCA Dome, Indianapolis, 3-16 & 3-18-1990
114,141—RCA Dome, Indianapolis, 3-19 & 3-21-1993
110,972—RCA Dome, Indianapolis, 3-16 & 3-18-1989
95,235—RCA Dome, Indianapolis, 3-14 & 3-16-1996
94,419—RCA Dome, Indianapolis, 3-17 & 3-19-2005

#Before 2011, the second and third rounds were referred to as the first and second rounds.

All-Time Site and Arena History

TOURNAMENT GAMES BY ARENA

- 91—University of Dayton Arena, Dayton, OH, 1970-2012
- 83—Municipal Auditorium, Kansas City, MO, 1940-64
- 81—Jon M. Huntsman Center, Salt Lake City, 1971-2006
- 71—Madison Square Garden, New York, 1943-61
- 63—Greensboro Coliseum, Greensboro, NC, 1974-2012
- 60—RCA Dome, Indianapolis, 1987-2006
- 59—McKale Center, Tucson, AZ, 1974-2011
- 55—Omni, Atlanta, 1977-92
- 53—Charlotte Coliseum I, Charlotte, NC, 1958-93
- 50—Freedom Hall, Louisville, KY, 1958-91

REGIONAL CHAMPIONSHIP GAMES BY ARENA

- 13—Municipal Auditorium, Kansas City, MO, 1940-52
- 11—IZOD Center, East Rutherford, NJ, 1984-2007
- 9—Madison Square Garden, New York, 1943-51
- 8—Allen Field House, Lawrence, KS, 1956-78
- 8—Gill Coliseum, Corvallis, OR, 1952-67
- 8—William Neal Reynolds Coliseum, Raleigh, NC, 1952-82
- 7—Rupp Arena, Lexington, KY, 1977-2002
- 6—Ahearn Field House, Manhattan, KS, 1953-69
- 6—Carrier Dome, Syracuse, NY, 1983-2010
- 6—Cole Field House, College Park, MD, 1962-77

NATIONAL CHAMPIONSHIP GAMES BY ARENA

- 9—Municipal Auditorium, Kansas City, MO, 1940-64
- 7—Madison Square Garden, New York, 1943-50
- 6—Freedom Hall, Louisville, KY, 1958-69
- 5—Mercedes-Benz Superdome, New Orleans, 1982-2012
- 4—RCA Dome, Indianapolis, 1991-2006
- 3—Alamodome, San Antonio, 1998-2008
- 3—Kingdome, Seattle, 1984-95
- 2—Cole Field House, College Park, MD, 1966-70
- 2—Georgia Dome, Atlanta, 2002-07
- 2—Hubert H. Humphrey Metrodome, Minneapolis, 1991-2001
- 2—L.A. Sports Arena, Los Angeles, 1968-72
- 2—St. Louis Arena, St. Louis, 1973-78
- 2—Spectrum, Philadelphia, 1976-81

TOURNAMENT GAMES BY CITY

- 122—Kansas City, MO, 1940-2009
- 91—Dayton, OH, 1970-2012
- 86—Charlotte, NC, 1958-2011
- 86—Salt Lake City, 1968-2010
- 82—Atlanta, 1977-2012
- 82—Indianapolis, 1940-2010
- 77—Philadelphia, 1939-2009
- 76—New York, 1943-74
- 70—Lexington, KY, 1955-2007
- 63—Greensboro, NC, 1974-2012

REGIONAL CHAMPIONSHIP GAMES BY CITY

- 17—Kansas City, MO, 1940-95
- 11—East Rutherford, NJ, 1986-2007
- 11—Lexington, KY, 1957-2002
- 9—New York, 1943-51
- 9—St. Louis, 1982-2012
- 8—Atlanta, 1981-2012
- 8—Charlotte, NC, 1958-2008
- 8—Corvallis, OR, 1952-67
- 8—Lawrence, KS, 1956-78
- 8—Philadelphia, 1939-2001
- 8—Raleigh, NC, 1951-82

NATIONAL CHAMPIONSHIP GAMES BY CITY

- 10—Kansas City, MO, 1940-88
- 7—New York, 1943-50
- 6—Indianapolis, 1980-2010
- 6—Louisville, KY, 1958-69
- 5—New Orleans, 1982-2012
- 5—Seattle, 1949-95
- 3—Atlanta, 1977-2007
- 3—Minneapolis, 1951-2001
- 3—St. Louis, 1973-2005
- 3—San Antonio, 1998-2008

TOURNAMENT GAMES BY STATE

- 233—North Carolina, 1951-2012
- 166—Missouri, 1940-2012
- 163—New York, 1943-2010
- 159—California, 1939-2011
- 158—Texas, 1957-2011
- 155—Ohio, 1957-2012
- 141—Utah, 1960-2010
- 132—Kentucky, 1955-2012
- 121—Indiana, 1940-2010
- 96—Arizona, 1974-2012

REGIONAL CHAMPIONSHIP GAMES BY STATE

- 26—Missouri, 1940-2012
- 19—California, 1939-2011
- 19—North Carolina, 1952-2008
- 17—Kansas, 1953-78
- 17—Texas, 1957-2011
- 16—New York, 1943-2010
- 15—Kentucky, 1957-2002
- 12—New Jersey, 1986-2011
- 11—Utah, 1962-2010
- 10—Oregon, 1952-75

NATIONAL CHAMPIONSHIP GAMES BY STATE

- 13—Missouri, 1940-2005
- 7—Kentucky, 1958-85
- 7—New York, 1943-50
- 6—Indiana, 1980-2010
- 6—Texas, 1971-2011
- 5—Louisiana, 1982-2012
- 5—Washington, 1949-95
- 4—California, 1960-75
- 3—Georgia, 1977-2007
- 3—Minnesota, 1951-2001

Tournament Game Arenas By Site

G	S	Year	Round	City	Facility	Built	Capacity
ALABAMA							
3	2	1982	ME Rgnl	Birmingham	#Birmingham-Jefferson Civic Center	1976	17,500
4	2	1984	E 1st-2d	"	"		"
3	2	1985	SE Rgnl	"	"		"
6	3	1987	SE 1st-2d	"	"		"
3	2	1988	SE Rgnl	"	"		"
3	2	1997	SE Rgnl	"	"		"
3	2	1995	SE Rgnl	"	"		16,835
6	3	2000	S 1st-2d	"	"		"
6	3	2003	1st-2d	"	"		"
6	3	2008	1st-2d	"	"		16,045
4	2	1974	ME Rgnl	Tuscaloosa	Memorial Coliseum	1968	15,043
2	1	1975	ME 1st	"	"		"
4	2	1981	ME 1st-2d	"	"		"
					(now named Coleman Coliseum)		
ARIZONA							
3	2	2009	W Rgnl	Glendale	#University of Phoenix Stadium	2006	38,831
2	1	1975	W 1st	Tempe	University Activity Center	1974	14,287
2	1	1976	W 1st	"	"		"
2	1	1978	W 1st	"	"		"
4	2	1980	W 1st-2d	"	"		"
6	3	1992	W 1st-2d	"	"		"
6	3	1996	W 1st-2d	"	"		13,849
4	2	1974	W Rgnl	Tucson	McKale Center	1973	14,214
2	1	1977	W 1st	"	"		"
2	1	1979	W 2d	"	"		"
3	2	1980	W Rgnl	"	"		"
6	3	1987	W 1st-2d	"	"		13,124
6	3	1989	W 1st-2d	"	"		13,477
6	3	1991	W 1st-2d	"	"		"
6	3	1993	W 1st-2d	"	"		"
6	3	1997	W 1st-2d	"	"		14,428
6	3	2000	W 1st-2d	"	"		13,859
6	3	2005	1st-2d	"	"		13,751
6	3	2011	2d-3d	"	"		13,808
3	2	1999	W Rgnl	Phoenix	#America West Arena	1992	19,022
3	2	2004	Rgnl	"	"		18,711
3	2	2008	W Rgnl	"	#US Airways Center (name change)		18,103
3	2	2012	W Rgnl	"	"		18,330
ARKANSAS							
6	3	2008	1st-2d	North Little Rock	#Alltel Arena	1999	16,060
CALIFORNIA							
3	2	1998	W Rgnl	Anaheim	#Arrowhead Pond	1993	17,533
3	2	2001	W Rgnl	"	"		17,268
3	2	2003	W Rgnl	"	"		17,607
6	3	2008	1st-2d	"	#Honda Center (name change)		"
3	2	2011	W Rgnl	"	"		17,960
2	1	1958	W 1st	Berkeley	Harmon Arena	1933	6,450
6	3	1986	W 1st-2d	Long Beach	#Long Beach Arena	1965	12,000
6	3	1990	W 1st-2d	"	"		"
4	2	1968	Final Four	Los Angeles	#L.A. Sports Arena	1959	15,509
4	2	1972	Final Four	"	"		"
3	2	1994	W Rgnl	"	"		14,616
4	2	1966	W Rgnl	"	Pauley Pavilion	1965	12,543
4	2	1969	W Rgnl	"	"		"
4	2	1973	W Rgnl	"	"		"
3	2	1976	W Rgnl	"	"		"
4	2	1979	W 1st-2d	"	"		"
4	2	1981	W 1st-2d	"	"		"
3	2	1984	W Rgnl	"	"		"
6	3	1988	W 1st-2d	"	"		"
3	2	1990	W Rgnl	Oakland	#Oakland-Alameda County Coliseum	1966	15,000
3	2	1995	W Rgnl	"	"		15,039
3	2	2006	Rgnl	"	Oakland Arena (name change)		19,243
1	1	1953	W-2 1st	Palo Alto	Old Pavilion	1922	3,000
6	3	1994	W 1st-2d	Sacramento	#Arco Arena	1981	16,418
6	3	1998	W 1st-2d	"	"		16,621
6	3	2002	1st-2d	"	"		16,250
6	3	2007	1st-2d	"	"		16,127
					(now named Sleep Train Arena)		
4	2	1975	Final Four	San Diego	#San Diego Sports Arena	1967	13,741
6	3	2001	W 1st-2d	"	Cox Arena at Aztec Bowl	1997	12,200
6	3	2006	1st-2d	"	"		11,686
					(now named Viejas Arena at Aztec Bowl)		
4	2	1939	Wn Rgnl	San Francisco	#California Coliseum	1938	9,476
2	1	1955	W-2 1st	"	#Cow Palace	1941	14,500
4	2	1958	W Rgnl	"	"		"
4	2	1959	W Rgnl	"	"		"
1	1	1960	W 1st	"	"		"
4	2	1960	Final Four	"	"		"

G	S	Year	Round	City	Facility	Built	Capacity
3	2	1997	W Rgnl	San Jose	#San Jose Arena	1993	18,543
3	2	2002	W Rgnl	"	#Compaq Center (name change)		18,150
3	2	2007	W Rgnl	"	#HP Pavilion (name change)		18,094
6	3	2010	1st-2d	"	"		18,500
COLORADO							
3	2	1985	W Rgnl	Denver	#McNichols Sports Arena	1974	17,022
3	2	1989	W Rgnl	"	"		"
3	2	1990	Final Four	"	"		"
3	2	1996	W Rgnl	"	"		"
6	3	1999	W 1st-2d	"	"		18,707
6	3	2004	1st-2d	"	#Pepsi Center	1999	19,555
6	3	2008	1st-2d	"	"		18,798
6	3	2011	2d-3d	"	"		19,533
2	1	1967	MW,W 1st	Fort Collins	Moby Arena	1966	9,001
CONNECTICUT							
4	2	1983	E 1st-2d	Hartford	#Hartford Civic Center	1975	16,016
6	3	1985	E 1st-2d	"	"		"
6	3	1988	E 1st-2d	"	"		"
6	3	1990	E 1st-2d	"	"		"
6	3	1998	E 1st-2d	"	"		"
					(now named XL Center)		
DISTRICT OF COLUMBIA							
6	3	1998	E 1st-2d	Washington	#MCI Center	1997	19,288
6	3	2002	1st-2d	"	"		19,369
3	2	2006	Rgnl	"	"		19,300
6	3	2008	1st-2d	"	#Verizon Center (name change)		18,400
6	3	2011	2d-3d	"	"		18,725
FLORIDA							
6	3	2006	1st-2d	Jacksonville	Veterans Memorial Coliseum	2003	13,663
6	3	2010	1st-2d	"	"		15,000
3	2	1994	E Rgnl	Miami	#Miami Arena	1988	15,308
6	3	2009	1st-2d	"	#American Airlines Arena	1999	17,930
6	3	1993	SE 1st-2d	Orlando	#Orlando Arena	1989	14,910
6	3	1996	SE 1st-2d	"	"		16,894
6	3	1999	South 1st-2d	"	"		17,164
6	3	2004	1st-2d	"	#TD Waterhouse Centre (name change) (now named Amway Center)		16,494
6	3	1994	SE 1st-2d	St. Petersburg	#ThunderDome	1990	22,665
3	2	1998	South Rgnl	"	#Tropicana Field (name change)		40,589
3	2	1999	Final Four	"	"		41,340
6	3	1995	SE 1st-2d	Tallahassee	#Tallahassee-Leon County Civic Center	1981	13,000
4	2	1983	ME 1st-2d	Tampa	USF Sun Dome	1980	10,347
6	3	2003	1st-2d	"	#Ice Palace Arena	1996	21,817
6	3	2008	1st-2d	"	#St. Pete Times Forum (name change)		20,814
6	3	2011	2d-3d	"	"		21,865
GEORGIA							
4	2	1971	ME Rgnl	Athens	Georgia Coliseum	1964	11,200
4	2	1977	Final Four	Atlanta	#Omni	1972	16,271
3	2	1981	E Rgnl	"	"		"
3	2	1984	E Rgnl	"	"		"
6	3	1985	E 1st-2d	"	"		"
3	2	1986	SE Rgnl	"	"		"
6	3	1987	SE 1st-2d	"	"		"
6	3	1988	SE 1st-2d	"	"		"
6	3	1989	SE 1st-2d	"	"		"
6	3	1990	E 1st-2d	"	"		"
6	3	1991	SE 1st-2d	"	"		"
6	3	1992	SE 1st-2d	"	"		"
3	2	1996	E Rgnl	"	#Georgia Dome	1992	40,628
6	3	1998	South 1st-2d	"	"		26,700
3	2	2001	South Rgnl	"	"		50,644
3	2	2002	Final Four	"	"		52,647
3	2	2004	Rgnl	"	"		44,422
3	2	2006	Rgnl	"	"		36,375
3	2	2007	Final Four	"	"		51,458
3	2	2012	S Rgnl	"	"		41,650
IDAHO							
4	2	1983	W 1st-2d	Boise	BSU Pavilion	1982	12,200
6	3	1989	W 1st-2d	"	"		"
6	3	1992	W 1st-2d	"	"		"
6	3	1995	W 1st-2d	"	"		12,375
6	3	1998	W 1st-2d	"	"		11,900
6	3	2001	W 1st-2d	"	"		12,375
6	3	2005	1st-2d	"	"		12,009
6	3	2009	1st-2d	"	Taco Bell Arena (name change)		12,194
1	1	1957	W 1st	Pocatello	ISU Gymnasium (now named Reed Gym)	1948	3,500
2	1	1972	W 1st	"	ISU Minidome	1969	12,000
2	1	1974	W 1st	"	"		"
2	1	1977	W 1st	"	"		"
					(now named Holt Arena)		

G	S	Year	Round	City	Facility	Built	Capacity
ILLINOIS							
2	1	1969	ME 1st	Carbondale	SIU Arena	1964	10,014
1	1	1960	MW 1st	Chicago	Alumni Arena	1956	5,308
4	2	1952	E-2 Rgnl	"	#Chicago Stadium	1929	17,458
4	2	1953	E-2 Rgnl	"	"	"	"
6	3	1998	MW 1st-2d	"	#United Center	1994	22,579
6	3	2002	1st-2d	"	"	"	21,300
6	3	2007	1st-2d	"	"	"	22,767
6	3	2011	2d-3d	"	"	"	20,062
1	1	1939	CH	Evanston	Patten Gym	1910	6,000
4	2	1955	E-2 Rgnl	"	McGaw Hall	1952	10,500
4	2	1956	Final Four	"	"	"	"
2	1	1958	ME 1st	"	"	"	"
4	2	1959	ME Rgnl	"	"	"	"
2	1	1963	ME 1st	"	"	"	"
2	1	1964	ME 1st	"	"	"	"
4	2	1967	ME Rgnl	"	"	"	"
(now named Welsh-Ryan Arena/McGaw Hall)							
1	1	1954	W-1 1st	Peoria	Robertson Memorial Field House	1949	7,300
6	3	1987	MW 1st-2d	Rosemont	#Rosemont Horizon	1980	17,500
6	3	1993	MW 1st-2d	"	"	"	"
3	2	2005	Rgnl	"	#Allstate Arena (name change)	"	16,957
INDIANA							
2	1	1977	ME 1st	Bloomington	Assembly Hall	1971	17,357
2	1	1979	ME 2d	"	"	"	"
3	2	1981	ME Rgnl	"	"	"	"
4	2	1983	ME 1st-2d	Evansville	#Roberts Municipal Stadium	1956	11,096
2	1	1953	E-2 1st	Fort Wayne	#Allen County Coliseum	1952	9,500
2	1	1954	E-2 1st	"	"	"	"
2	1	1956	ME 1st	"	"	"	"
3	2	1940	En Rgnl	Indianapolis	Butler Field House (now named Hinkle Field House)	1928	15,000
2	1	1978	ME 1st	"	#Market Square Arena	1974	17,000
3	2	1979	ME Rgnl	"	"	"	"
4	2	1980	Final Four	"	"	"	"
4	2	1982	ME 1st-2d	"	"	"	"
6	3	1987	MW 1st-2d	"	#Hoosier Dome	1984	47,100
6	3	1989	MW 1st-2d	"	"	"	"
6	3	1990	MW 1st-2d	"	"	"	"
3	2	1991	Final Four	"	"	"	"
6	3	1993	MW 1st-2d	"	"	"	"
6	3	1996	SE 1st-2d	"	#RCA Dome (name change)	"	40,868
3	2	1997	Final Four	"	"	"	47,028
6	3	1999	South 1st-2d	"	"	"	37,900
3	2	2000	Final Four	"	"	"	43,116
6	3	2003	1st-2d	"	"	"	37,004
6	3	2005	1st-2d	"	"	"	37,565
3	2	2006	Final Four	"	"	"	43,822
3	2	2009	MW Rgnl	"	#Lucas Oil Stadium	2008	39,221
3	2	2010	Final Four	"	"	"	70,930
2	1	1971	ME 1st	South Bend	Athletic & Convocation Center	1968	11,350
2	1	1976	ME 1st	"	"	"	"
6	3	1985	SE 1st-2d	"	"	"	"
6	3	1988	MW 1st-2d	"	The Joyce Center (name change)	"	"
2	1	1974	ME 1st	Terre Haute	Hulman Center	1973	10,200
4	2	1980	ME 1st-2d	West Lafayette	Mackey Arena	1967	14,123
IOWA							
4	2	1972	MW Rgnl	Ames	James Hilton Coliseum	1971	14,020
4	2	1954	E-2 Rgnl	Iowa City	Iowa Field House	1927	13,500
4	2	1956	MW Rgnl	"	"	"	"
4	2	1962	ME Rgnl	"	"	"	"
4	2	1966	ME Rgnl	"	"	"	"
KANSAS							
4	2	1956	MW Rgnl	Lawrence	Allen Field House	1955	15,200
4	2	1958	MW Rgnl	"	"	"	"
4	2	1959	MW Rgnl	"	"	"	"
4	2	1961	MW Rgnl	"	"	"	"
4	2	1963	MW Rgnl	"	"	"	"
4	2	1967	MW Rgnl	"	"	"	"
4	2	1970	MW Rgnl	"	"	"	"
2	1	1976	MW 1st	"	"	"	"
3	2	1978	MW Rgnl	"	"	"	"
4	2	1979	MW 1st-2d	"	"	"	"
4	2	1953	W-1 Rgnl	Manhattan	Ahearn Field House	1951	12,500
4	2	1955	W-1 Rgnl	"	"	"	"
4	2	1960	MW Rgnl	"	"	"	"
4	2	1962	MW Rgnl	"	"	"	"
4	2	1965	MW Rgnl	"	"	"	"
4	2	1969	MW Rgnl	"	"	"	"
2	1	1956	MW 1st	Wichita	Levitt Arena	1955	10,716
4	2	1964	MW Rgnl	"	"	"	10,666
2	1	1966	MW,W 1st	"	"	"	"
4	2	1968	MW Rgnl	"	"	"	"

G	S	Year	Round	City	Facility	Built	Capacity
4	2	1971	MW Rgnl	"	"		"
2	1	1973	MW 1st	"	"		"
2	1	1978	MW 1st	"	"		"
4	2	1981	MW 1st-2d	"	"		"
6	3	1994	MW 1st-2d	"	#Kansas Coliseum	1978	10,086
KENTUCKY							
2	1	1965	ME 1st	Bowling Green	E.A. Diddle Arena	1963	8,500
4	2	1980	ME 1st-2d	"	"		12,370
2	1	1955	E-2 1st	Lexington	Memorial Coliseum	1950	11,500
4	2	1957	ME Rgnl	"	"		"
4	2	1958	ME Rgnl	"	"		"
2	1	1959	ME 1st	"	"		"
2	1	1960	ME 1st	"	"		"
2	1	1962	ME 1st	"	"		"
4	2	1965	ME Rgnl	"	"		"
2	1	1967	ME 1st	"	"		"
4	2	1968	ME Rgnl	"	"		"
2	1	1975	ME 1st	"	"		"
3	2	1977	ME Rgnl	"	#Rupp Arena	1976	23,000
3	2	1980	ME Rgnl	"	"		"
3	2	1984	ME Rgnl	"	"		"
3	2	1985	Final Four	"	"		"
3	2	1989	SE Rgnl	"	"		"
3	2	1992	SE Rgnl	"	"		"
6	3	1994	SE 1st-2d	"	"		22,564
3	2	1996	SE Rgnl	"	"		23,890
6	3	1998	South 1st-2d	"	"		22,700
3	2	2002	South Rgnl	"	"		22,095
6	3	2007	1st-2d	"	"		21,947
4	2	1958	Final Four	Louisville	#Freedom Hall	1956	17,865
4	2	1959	Final Four	"	"		18,750
4	2	1960	ME Rgnl	"	"		"
6	3	1961	ME 1st-Rgnl	"	"		18,000
4	2	1962	Final Four	"	"		"
4	2	1963	Final Four	"	"		"
4	2	1967	Final Four	"	"		18,800
4	2	1969	Final Four	"	"		"
3	2	1976	MW Rgnl	"	"		16,433
4	2	1983	MW 1st-2d	"	"		16,613
3	2	1987	SE Rgnl	"	"		19,865
6	3	1991	SE 1st-2d	"	"		18,946
6	3	2012	2d-3d	"	KFC Yum! Center	2010	22,028
LOUISIANA							
3	2	1976	ME Rgnl	Baton Rouge	Assembly Center	1971	14,327
2	1	1977	ME 1st	"	"		14,327
6	3	1986	ME 1st-2d	"	"		14,236
4	2	1942	En Rgnl	New Orleans	Tulane Gym (now named Fogelman Arena)	1933	3,000
3	2	1981	MW Rgnl	"	#Louisiana Superdome	1975	64,959
3	2	1982	Final Four	"	"		"
3	2	1987	Final Four	"	"		"
3	2	1990	SE Rgnl	"	"		"
3	2	1993	Final Four	"	"		64,151
6	3	1999	MW 1st-2d	"	"		24,912
6	3	2001	South 1st-2d	"	"		"
3	2	2003	Final Four	"	"		54,432
3	2	2012	Final Four	"	#Mercedes-Benz Superdome (name change)		73,361
6	3	2007	1st-2d	"	#New Orleans Arena	1999	18,363
6	3	2010	1st-2d	"	"		18,500
3	2	2011	SE Rgnl	"	"		18,318
MARYLAND							
6	3	1995	E 1st-2d	Baltimore	#Baltimore Arena	1962	12,959
4	2	1962	E Rgnl	College Park	Cole Field House	1955	14,500
4	2	1963	E Rgnl	"	"		"
4	2	1965	E Rgnl	"	"		"
4	2	1966	Final Four	"	"		"
4	2	1967	E Rgnl	"	"		"
2	1	1968	E 1st	"	"		"
4	2	1969	E Rgnl	"	"		"
4	2	1970	Final Four	"	"		"
3	2	1977	E Rgnl	"	"		"
6	3	1991	E 1st-2d	"	"		"
6	3	1994	E 1st-2d	Landover	#USAir Arena	1973	19,611
MASSACHUSETTS							
6	3	1999	E 1st-2d	Boston	#FleetCenter	1995	18,800
6	3	2003	1st-2d	"	"		18,389
3	2	2009	E Rgnl	"	#TD Banknorth Garden (name change)		19,169
3	2	2012	E Rgnl	"	#TD Garden (name change)		19,308
6	3	1992	E 1st-2d	Worcester	#Centrum	1983	13,452
6	3	2005	1st-2d	"	" (now named DCU Center)		13,008
MICHIGAN							
6	3	1997	MW 1st-2d	Auburn Hills	#Palace of Auburn Hills	1988	21,020
3	2	2000	MW Rgnl	"	"		21,214
6	3	2006	1st-2d	"	"		23,585

G	S	Year	Round	City	Facility	Built	Capacity
3	2	2008	MW Rgnl	Detroit	#Ford Field	2002	78,000
3	2	2009	Final Four	"	"	"	72,500
4	2	1963	ME Rgnl	East Lansing	Jenison Field House	1940	12,500
3	2	1988	MW Rgnl	Pontiac	#Pontiac Silverdome	1975	36,000
3	2	1991	MW Rgnl	"	"	"	"
MINNESOTA							
2	1	1951	CH-N3d	Minneapolis	Williams Arena	1928	18,052
4	2	1964	ME Rgnl	"	"	"	"
6	3	1986	MW 1st-2d	"	#Hubert H. Humphrey Metrodome	1982	35,000
3	2	1989	MW Rgnl	"	"	"	"
6	3	1991	MW 1st-2d	"	"	"	"
3	2	1992	Final Four	"	"	"	"
3	2	1996	MW Rgnl	"	"	"	"
6	3	2000	MW 1st-2d	"	"	"	"
3	2	2001	Final Four	"	"	"	45,994
3	2	2003	MW Rgnl	"	"	"	38,296
3	2	2006	Rgnl	"	"	"	33,000
6	3	2009	1st-2d	"	"	"	25,957
MISSOURI							
5	3	1940	Wn Rgnl-CH	Kansas City	#Municipal Auditorium	1935	10,500
5	3	1941	Wn Rgnl-CH	"	"	"	"
5	3	1942	Wn Rgnl-CH	"	"	"	"
4	2	1943	Wn Rgnl	"	"	"	"
4	2	1944	Wn Rgnl	"	"	"	"
4	2	1945	Wn Rgnl	"	"	"	"
4	2	1946	Wn Rgnl	"	"	"	"
4	2	1947	Wn Rgnl	"	"	"	"
4	2	1948	Wn Rgnl	"	"	"	"
4	2	1949	Wn Rgnl	"	"	"	"
4	2	1950	Wn Rgnl	"	"	"	"
8	4	1951	W 1st-Rgnl	"	"	"	"
4	2	1952	W-1 Rgnl	"	"	"	"
4	2	1953	Final Four	"	"	"	"
4	2	1954	Final Four	"	"	"	"
4	2	1955	Final Four	"	"	"	"
4	2	1957	Final Four	"	"	"	"
4	2	1961	Final Four	"	"	"	"
4	2	1964	Final Four	"	"	"	"
3	2	1983	MW Rgnl	"	#Kemper Arena	1975	17,153
3	2	1986	MW Rgnl	"	"	"	"
3	2	1988	Final Four	"	"	"	"
3	2	1992	MW Rgnl	"	"	"	"
3	2	1995	MW Rgnl	"	"	"	16,668
6	3	1997	MW 1st-2d	"	"	"	"
6	3	2001	MW 1st-2d	"	"	"	17,484
6	3	2004	1st-2d	"	"	"	17,663
6	3	2009	1st-2d	"	#Sprint Center	2007	18,381
4	2	1973	Final Four	St. Louis	#St. Louis Arena	1929	18,500
4	2	1978	Final Four	"	#Checkerdome (name change)	"	"
3	2	1982	MW Rgnl	"	"	"	"
3	2	1984	MW Rgnl	"	#Arena (name changed back)	"	"
3	2	1993	MW Rgnl	"	"	"	"
3	2	1998	MW Rgnl	"	#Kiel Center	1994	22,172
3	2	1999	MW Rgnl	"	#Trans World Dome	1995	37,542
6	3	2002	1st-2d	"	"	"	30,000
3	2	2004	Rgnl	"	#Edward Jones Dome (name change)	"	38,459
3	2	2005	Final Four	"	"	"	47,262
3	2	2007	MW Rgnl	"	"	"	40,645
3	2	2010	MW Rgnl	"	"	"	"
3	2	2012	MW Rgnl	"	"	"	26,265
NEBRASKA							
4	2	1980	MW 1st-2d	Lincoln	Bob Devaney Sports Center	1976	14,478
4	2	1984	MW 1st-2d	"	"	"	"
6	3	1988	MW 1st-2d	"	"	"	"
2	1	1977	MW 1st	Omaha	#Omaha Civic Auditorium	1954	9,373
6	3	2008	1st-2d	"	#Qwest Center Omaha	2003	17,137
6	3	2012	2d-3d	"	#CenturyLink Center Omaha (name change)	"	17,301
NEW JERSEY							
4	2	1984	E 1st-2d	East Rutherford	#Meadowlands Arena	1981	20,149
3	2	1986	E Rgnl	"	"	"	"
3	2	1987	E Rgnl	"	"	"	"
3	2	1988	E Rgnl	"	"	"	"
3	2	1989	E Rgnl	"	"	"	"
3	2	1990	E Rgnl	"	"	"	"
3	2	1991	E Rgnl	"	"	"	"
3	2	1993	E Rgnl	"	"	"	"
3	2	1995	E Rgnl	"	"	"	"
3	2	1996	Final Four	"	#Continental Airlines Arena (name change)	"	19,761
3	2	1999	E Rgnl	"	"	"	19,229
3	2	2004	E Rgnl	"	"	"	19,557
3	2	2007	E Rgnl	"	"	"	"
					(now named IZOD Center)		
3	2	2011	E Rgnl	Newark	#Prudential Center	2007	19,973
1	1	1970	E 1st	Princeton	Jadwin Gymnasium	1969	7,550
1	1	1972	E 1st	"	"	"	"

G	S	Year	Round	City	Facility	Built	Capacity
NEW MEXICO							
4	2	1968	W Rgnl	Albuquerque	University Arena	1966	14,831
3	2	1978	W Rgnl	"	"	"	17,126
3	2	1983	Final Four	"	"	"	"
6	3	1985	W 1st-2d	"	"	"	"
3	2	1992	W Rgnl	"	"	"	"
6	3	1996	W 1st-2d	"	"	"	"
3	2	2000	W Rgnl	"	"	"	16,004
6	3	2002	1st-2d	"	"	"	15,868
3	2	2005	Rgnl	"	"	"	15,763
6	3	2012	2d-3d	"	"	"	13,893
1	1	1959	W 1st	Las Cruces	Las Cruces HS Gym	1958	5,000
2	1	1969	W 1st	"	Pan American Center	1968	13,222
2	1	1972	MW 1st	"	"	"	"
4	2	1975	MW Rgnl	"	"	"	"
NEW YORK							
6	3	1995	E 1st-2d	Albany	#Knickerbocker Arena	1990	14,820
3	2	2003	E Rgnl	"	#Pepsi Arena (name change) (now named Times Union Center)	"	15,229
2	1	1954	E-1 1st	Buffalo	#Buffalo Memorial Auditorium	1936	13,900
6	3	2000	E 1st-2d	"	#Marine Midland Arena	1996	19,357
6	3	2004	1st-2d	"	#HSBC Arena (name change)	"	18,704
6	3	2010	1st-2d	"	"	"	19,200
						(now named First Niagara Center)	
1	1	1970	E 1st	Jamaica	Alumni Hall	1962	6,000
1	1	1971	E 1st	"	"	"	"
1	1	1972	E 1st	"	"	"	"
1	1	1973	E 1st	"	"	"	"
1	1	1974	E 1st	"	"	"	"
5	3	1943	En Rgnl-CH	New York City	#Madison Square Garden	1925	18,479
5	3	1944	En Rgnl-CH	"	"	"	"
5	3	1945	En Rgnl-CH	"	"	"	"
6	3	1946	En Rgnl-CH-N3d	"	"	"	"
6	3	1947	En Rgnl-CH-N3d	"	"	"	"
6	3	1948	En Rgnl-CH-N3d	"	"	"	"
4	2	1949	En Rgnl	"	"	"	"
6	3	1950	En Rgnl-CH-N3d	"	"	"	"
6	3	1951	E 1st-Rgnl	"	"	"	"
3	1	1955	E-1 1st TH	"	"	"	"
4	2	1956	E 1st	"	"	"	"
3	1	1957	E 1st TH	"	"	"	"
3	1	1958	E 1st TH	"	"	"	"
3	1	1959	E 1st TH	"	"	"	"
3	1	1960	E 1st TH	"	"	"	"
3	1	1961	E 1st TH	"	"	"	"
3	2	1983	E Rgnl	Syracuse	Carrier Dome	1980	33,000
6	3	1986	E 1st-2d	"	"	"	"
6	3	1987	E 1st-2d	"	"	"	"
6	3	1991	E 1st-2d	"	"	"	"
6	3	1993	E 1st-2d	"	"	"	"
3	2	1997	E Rgnl	"	"	"	32,048
3	2	2000	E Rgnl	"	"	"	31,805
3	2	2002	E Rgnl	"	"	"	"
3	2	2005	Rgnl	"	"	"	"
3	2	2010	E Rgnl	"	"	"	"
4	2	1982	E 1st-2d	Unjondale	#Nassau Coliseum	1972	16,547
6	3	1994	E 1st-2d	"	"	"	15,510
6	3	2001	E 1st-2d	"	"	"	16,115
NORTH CAROLINA							
6	3	1988	E 1st-2d	Chapel Hill	Dean E. Smith Center	1986	21,444
4	2	1958	E Rgnl	Charlotte	#Charlotte Coliseum I	1951	11,666
4	2	1959	E Rgnl	"	"	"	"
4	2	1960	E Rgnl	"	"	"	"
4	2	1961	E Rgnl	"	"	"	"
4	2	1973	E Rgnl	"	"	"	"
2	1	1975	E 1st	"	"	"	"
2	1	1976	E 1st	"	"	"	"
2	1	1978	E 1st	"	"	"	"
4	2	1981	E 1st-2d	"	"	"	"
4	2	1982	E 1st-2d	"	"	"	"
4	2	1984	E 1st-2d	"	"	"	"
6	3	1986	SE 1st-2d	"	"	"	"
6	3	1987	E 1st-2d	"	"	"	"
						(now named Bojangles' Coliseum)	
3	2	1991	SE Rgnl	"	#Charlotte Coliseum II	1988	23,339
3	2	1993	SE Rgnl	"	"	"	"
3	2	1994	Final Four	"	"	"	22,876
6	3	1997	SE 1st-2d	"	"	"	22,806
6	3	1999	E 1st-2d	"	"	"	"
6	3	2005	1st-2d	"	"	"	23,207
3	2	2008	E Rgnl	"	#Charlotte Bobcats Arena	2005	19,092
6	3	2011	2d-3d	"	Time Warner Cable Arena (name change)	"	18,980
1	1	1954	E-1 1st	Durham	Cameron Indoor Stadium	1939	8,564
4	2	1974	Final Four	Greensboro	#Greensboro Coliseum	1959	16,000
3	2	1976	E Rgnl	"	"	"	"

G	S	Year	Round	City	Facility	Built	Capacity
3	2	1979	E Rgnl	"	"	"	"
4	2	1980	E 1st-2d	"	"	"	"
4	2	1983	E 1st-2d	"	"	"	"
6	3	1986	E 1st-2d	"	"	"	"
6	3	1989	E 1st-2d	"	"	"	"
6	3	1992	E 1st-2d	"	"	"	"
3	2	1998	E Rgnl	"	"	"	23,235
6	3	2001	E 1st-2d	"	"	"	"
6	3	2006	1st-2d	"	"	"	22,447
6	3	2009	1st-2d	"	"	"	22,404
6	3	2012	2d-3d	"	"	"	18,706
2	1	1951	E 1st	Raleigh	William Neal Reynolds Coliseum	1949	12,400
4	2	1952	E-1 Rgnl	"	"	"	"
4	2	1953	E-1 Rgnl	"	"	"	"
4	2	1964	E Rgnl	"	"	"	"
4	2	1966	E Rgnl	"	"	"	"
4	2	1968	E Rgnl	"	"	"	"
2	1	1969	E 1st	"	"	"	"
4	2	1971	E Rgnl	"	"	"	"
4	2	1974	E Rgnl	"	"	"	"
2	1	1977	E 1st	"	"	"	"
4	2	1979	E 1st-2d	"	"	"	"
3	2	1982	E Rgnl	"	"	"	"
6	3	2004	1st-2d	"	#RBC Center	1999	19,722
6	3	2008	1st-2d	"	"	"	19,477
					(now named PNC Arena)		
6	3	1993	E 1st-2d	Winston-Salem	#Lawrence Joel Veterans Memorial Coliseum	1989	14,407
6	3	1997	E 1st-2d	"	"	"	14,368
6	3	2000	E 1st-2d	"	"	"	14,252
6	3	2007	1st-2d	"	"	"	14,148
OHIO							
3	2	1979	MW Rgnl	Cincinnati	#Riverfront Coliseum	1975	16,562
3	2	1987	MW Rgnl	"	"	"	"
6	3	1988	SE 1st-2d	"	"	"	"
6	3	1992	SE 1st-2d	"	"	"	"
					(now named U.S. Bank Arena)		
6	3	2000	MW 1st-2d	Cleveland	CSU Convocation Center	1991	13,374
6	3	2005	1st-2d	"	"	"	13,311
6	3	2011	2d-3d	"	Quicken Loans Arena	1994	20,164
2	1	1957	ME 1st	Columbus	St. John Arena	1956	13,489
4	2	1970	ME Rgnl	"	"	"	"
6	3	2004	1st-2d	"	#Nationwide Arena	2000	19,588
6	3	2007	1st-2d	"	"	"	19,916
6	3	2012	2d-3d	"	"	"	19,483
2	1	1970	ME 1st	Dayton	University of Dayton Arena	1969	13,455
4	2	1972	ME Rgnl	"	"	"	"
2	1	1973	ME 1st	"	"	"	"
4	2	1975	ME Rgnl	"	"	"	"
2	1	1976	ME 1st	"	"	"	"
3	2	1978	ME Rgnl	"	"	"	"
4	2	1981	ME 1st-2d	"	"	"	"
2	1	1983	OR	"	"	"	"
2	1	1984	OR	"	"	"	"
6	3	1985	SE 1st-2d	"	"	"	"
6	3	1986	MW 1st-2d	"	"	"	"
6	3	1991	MW 1st-2d	"	"	"	"
6	3	1992	MW 1st-2d	"	"	"	"
6	3	1995	MW 1st-2d	"	"	"	"
7	4	2001	MW OR, 1st-2d	"	"	"	"
1	1	2002	OR	"	"	"	12,837
1	1	2003	OR	"	"	"	"
1	1	2004	OR	"	"	"	"
1	1	2005	OR	"	"	"	"
7	4	2006	OR, 1st-2d	"	"	"	12,945
1	1	2007	OR	"	"	"	"
1	1	2008	OR	"	"	"	12,837
7	4	2009	OR, 1st-2d	"	"	"	12,591
1	1	2010	OR	"	"	"	"
4	2	2011	1st	"	"	"	13,200
4	2	2012	1st	"	"	"	12,879
2	1	1966	ME 1st	Kent	Memorial Gymnasium	1950	6,034
2	1	1968	ME 1st	"	"	"	"
OKLAHOMA							
1	1	1955	W-1 1st	El Reno	Thunderbird Coliseum	1954	4,000
2	1	1977	MW 1st	Norman	Lloyd Noble Center	1975	10,871
1	1	1957	MW 1st	Oklahoma City	Capitol Hill HS Arena	1953	4,000
3	2	1977	MW Rgnl	"	#Myriad Convention Center	1974	15,200
6	3	1994	MW 1st-2d	"	"	"	13,268
6	3	1998	MW 1st-2d	"	"	"	"
6	3	2003	1st-2d	"	#Ford Center	2002	18,462
6	3	2005	1st-2d	"	"	"	18,567
6	3	2010	1st-2d	"	"	"	18,203
4	2	1954	W-1 Rgnl	Stillwater	Gallagher Hall	1938	7,400
1	1	1958	MW 1st	"	"	"	"
4	2	1974	MW Rgnl	Tulsa	Mabee Center	1972	10,575

G	S	Year	Round	City	Facility	Built	Capacity
2	1	1975	MW 1st	"	"	"	"
2	1	1978	MW 1st	"	"	"	"
4	2	1982	MW 1st-2d	"	"	"	"
6	3	1985	MW 1st-2d	"	"	"	"
6	3	2011	2d-3d	"	BOK Center	2008	17,966
OREGON							
4	2	1952	W-2 Rgnl	Corvallis	Gill Coliseum	1949	10,000
4	2	1953	W-2 Rgnl	"	"	"	"
6	3	1954	W -2 1st-Rgnl	"	"	"	"
4	2	1955	W-2 Rgnl	"	"	"	"
4	2	1956	FW Rgnl	"	"	"	"
4	2	1957	W Rgnl	"	"	"	"
1	1	1960	W 1st	"	"	"	"
2	1	1962	W 1st	"	"	"	"
4	2	1964	W Rgnl	"	"	"	"
4	2	1967	W Rgnl	"	"	"	"
4	2	1983	W 1st-2d	"	"	"	"
2	1	1963	W 1st	Eugene	McArthur Court	1926	10,099
2	1	1964	W 1st	"	"	"	"
2	1	1976	W 1st	"	"	"	"
2	1	1978	W 1st	"	"	"	"
1	1	1959	W 1st	Portland	#Pacific International Livestock Pavilion (now named Pacific Exposition Center)	1919	4,200
6	3	1961	W 1st-Rgnl	"	#Memorial Coliseum	1960	12,666
4	2	1965	Final Four	"	"	"	"
4	2	1975	W Rgnl	"	"	"	"
6	3	2009	1st-2d	"	#Rose Garden	1995	19,570
6	3	2012	2d-3d	"	"	"	19,783
PENNSYLVANIA							
3	2	1939	En Rgnl	Philadelphia	Palestra	1927	9,200
2	1	1953	E-1 1st	"	"	"	"
4	2	1954	E-1 Rgnl	"	"	"	"
4	2	1955	E-1 Rgnl	"	"	"	"
4	2	1956	E Rgnl	"	"	"	"
4	2	1957	E Rgnl	"	"	"	"
3	1	1962	E 1st TH	"	"	"	"
3	1	1963	E 1st TH	"	"	"	"
3	1	1964	E 1st TH	"	"	"	"
3	1	1965	E 1st TH	"	"	"	"
1	1	1970	E 1st	"	"	"	"
1	1	1971	E 1st	"	"	"	"
1	1	1973	E 1st	"	"	"	"
1	1	1974	E 1st	"	"	"	"
2	1	1975	E 1st	"	"	"	"
2	1	1977	E 1st	"	"	"	"
2	1	1978	E 1st	"	"	"	"
2	1	1983	OR	"	"	"	"
3	1	1984	OR TH	"	"	"	"
4	2	1976	Final Four	"	#Spectrum	1967	17,937
3	2	1980	E Rgnl	"	"	"	"
4	2	1981	Final Four	"	"	"	"
3	2	1992	E Rgnl	"	"	"	"
3	2	2001	E Rgnl	"	#First Union Center	1996	20,060
6	3	2006	1st-2d	"	#Wachovia Center (name change)	"	19,990
6	3	2009	1st-2d	"	(now named Wells Fargo Center)	"	18,178
6	3	1997	E 1st-2d	Pittsburgh	#Civic Arena	1961	17,509
6	3	2002	1st-2d	"	#Mellon Arena (name change)	"	16,960
6	3	2012	2d-3d	"	#Consol Energy Center	2010	18,608
RHODE ISLAND							
1	1	1967	E 1st	Kingston	Keaney Gymnasium	1953	5,000
1	1	1968	E 1st	"	"	"	"
1	1	1969	E 1st	"	"	"	"
4	2	1975	E Rgnl	Providence	#Providence Civic Center	1972	12,155
2	1	1976	E 1st	"	"	"	"
3	2	1978	E Rgnl	"	"	"	"
2	1	1979	E 2d	"	"	"	"
4	2	1980	E 1st-2d	"	"	"	"
4	2	1981	E 1st-2d	"	"	"	"
3	2	1985	E Rgnl	"	"	"	"
6	3	1989	E 1st-2d	"	"	"	13,100
6	3	1996	E 1st-2d	"	"	"	11,931
6	3	2010	1st-2d	"	Dunkin' Donuts Center (name change)	"	13,106
SOUTH CAROLINA							
4	2	1970	E Rgnl	Columbia	Carolina Coliseum	1968	12,401
6	3	2002	1st-2d	Greenville	#BI-LO Center	1998	13,998
TENNESSEE							
2	1	1972	ME 1st	Knoxville	Stokely Athletics Center	1966	12,700
2	1	1978	ME 1st	"	"	"	"
3	2	1983	ME Rgnl	"	"	"	"
6	3	1990	SE 1st-2d	"	Thompson-Boling Arena	1987	24,535
3	2	1994	SE Rgnl	"	"	"	23,291
3	2	1999	South Rgnl	"	"	"	24,385
4	2	1984	MW 1st-2d	Memphis	#Mid-South Coliseum	1975	11,200

G	S	Year	Round	City	Facility	Built	Capacity
6	3	1995	SE 1st-2d	"	The Pyramid	1991	20,142
6	3	1997	SE 1st-2d	"	"	"	"
6	3	2001	South 1st-2d	"	"	"	"
3	2	2009	S Rgnl	"	#FedEx Forum	2004	17,663
4	2	1979	ME 1st-2d	Murfreesboro	Murphy Athletic Center	1972	11,520
4	2	1973	ME Rgnl	Nashville	Memorial Gymnasium	1952	15,626
4	2	1982	ME 1st-2d	"	"	"	"
6	3	1989	SE 1st-2d	"	"	"	"
6	3	1993	SE 1st-2d	"	"	"	"
6	3	2000	S 1st-2d	"	#Gaylord Entertainment Center	1996	17,297
6	3	2003	1st-2d	"	"	"	17,484
6	3	2005	1st-2d	"	"	"	17,286
6	3	2012	2d-3d	"	#Bridgestone Arena (name change)	"	17,554
TEXAS							
4	2	1981	MW 1st-2d	Austin	Frank Erwin Center	1977	16,231
6	3	1990	MW 1st-2d	"	"	"	"
6	3	1995	MW 1st-2d	"	"	"	16,042
3	2	2000	S Rgnl	"	"	"	16,731
3	2	2005	Rgnl	"	"	"	16,239
4	2	1957	MW Rgnl	Dallas	Moody Coliseum	1956	9,007
2	1	1962	MW 1st	"	"	"	"
2	1	1964	MW 1st	"	"	"	"
2	1	1979	MW 2d	"	"	"	"
4	2	1982	MW 1st-2d	"	#Reunion Arena	1980	17,000
3	2	1985	MW Rgnl	"	"	"	"
3	2	1986	Final Four	"	"	"	"
6	3	1989	MW 1st-2d	"	"	"	"
3	2	1990	MW Rgnl	"	"	"	"
3	2	1994	MW Rgnl	"	"	"	16,240
6	3	1996	MW 1st-2d	"	"	"	16,379
6	3	2002	1st-2d	"	#American Airlines Arena	2001	19,134
6	3	2006	1st-2d	"	"	"	"
2	1	1974	MW 1st	Denton	North Texas Coliseum	1973	10,000
2	1	1976	MW 1st	"	"	"	"
4	2	1980	MW 1st-2d	"	"	"	"
4	2	1981	W 1st-2d	El Paso	Special Events Center	1977	12,000
2	1	1969	MW 1st	Fort Worth	Daniel-Meyer Coliseum	1961	7,166
2	1	1970	MW 1st	"	"	"	"
1	1	1961	MW 1st	Houston	Delmar Field House	1960	5,300
4	2	1971	Final Four	"	#Astrodome	1965	31,765
2	1	1971	MW 1st	"	Hofheinz Pavilion	1969	10,066
4	2	1973	MW Rgnl	"	"	"	"
6	3	1985	MW 1st-2d	"	"	"	"
3	2	1980	MW Rgnl	"	#The Summit	1975	16,016
4	2	1983	MW 1st-2d	"	"	"	"
3	2	1986	W Rgnl	"	"	"	"
3	2	2008	S Rgnl	"	#Reliant Stadium	2002	71,500
3	2	2010	S Rgnl	"	"	"	"
3	2	2011	Final Four	"	"	"	76,995
2	1	1963	MW 1st	Lubbock	Lubbock Memorial Coliseum	1956	8,174
2	1	1965	MW 1st	"	"	"	"
4	2	1966	MW Rgnl	"	"	"	"
2	1	1975	MW 1st	"	"	"	"
3	2	1997	MW Rgnl	San Antonio	#Alamodome	1993	41,250
3	2	1998	Final Four	"	"	"	40,509
3	2	2001	MW Rgnl	"	"	"	"
3	2	2003	S Rgnl	"	"	"	38,329
3	2	2004	Final Four	"	"	"	44,468
3	2	2007	S Rgnl	"	"	"	30,800
3	2	2008	Final Four	"	"	"	43,718
3	2	2011	SW Rgnl	"	"	"	22,630
UTAH							
2	1	1971	W 1st	Logan	Dee Glen Smith Spectrum	1970	10,270
2	1	1973	W 1st	"	"	"	"
4	2	1982	W 1st-2d	"	"	"	"
4	2	1980	W 1st-2d	Ogden	Dee Event Center	1977	11,592
3	2	1983	W Rgnl	"	"	"	"
6	3	1986	W 1st-2d	"	"	"	"
6	3	1994	W 1st-2d	"	"	"	"
1	1	1960	W 1st	Provo	George Albert Smith Field House	1951	10,500
4	2	1962	W Rgnl	"	"	"	"
4	2	1963	W Rgnl	"	"	"	"
4	2	1965	W Rgnl	"	"	"	"
2	1	1970	W 1st	"	"	"	"
4	2	1972	W Rgnl	"	Marriott Center	1971	22,700
3	2	1977	W Rgnl	"	"	"	"
3	2	1979	W Rgnl	"	"	"	"
3	2	1982	W Rgnl	"	"	"	"
2	1	1968	MW,W 1st	Salt Lake City	Nielsen Field House	1940	5,000
4	2	1971	W Rgnl	"	Special Events Center	1969	15,000
4	2	1979	Final Four	"	"	"	"
3	2	1981	W Rgnl	"	"	"	"
4	2	1984	W 1st-2d	"	"	"	"

G	S	Year	Round	City	Facility	Built	Capacity
6	3	1985	W 1st-2d	"	"		"
6	3	1987	W 1st-2d	"	"		"
6	3	1988	W 1st-2d	"	Jon M. Huntsman Center (name change)		"
6	3	1990	W 1st-2d	"	"		"
6	3	1991	W 1st-2d	"	"		"
6	3	1993	W 1st-2d	"	"		"
6	3	1995	W 1st-2d	"	"		14,910
6	3	1997	W 1st-2d	"	"		14,925
6	3	2000	W 1st-2d	"	"		"
6	3	2003	1st-2d	"	"		"
6	3	2006	1st-2d	"	"		15,122
3	2	2010	W Rgnl	"	#EnergySolutions Arena	1991	19,911
VIRGINIA							
2	1	1966	E 1st	Blacksburg	Cassell Coliseum	1964	10,000
2	1	1967	W 1st	"	"		"
6	3	1990	SE 1st-2d	Richmond	#Richmond Coliseum	1971	11,051
6	3	1996	E 1st-2d	"	"		11,859
1	1	1972	E 1st	Williamsburg	William and Mary Hall	1970	10,070
1	1	1973	E 1st	"	"		"
WASHINGTON							
2	1	1975	W 1st	Pullman	Wallis Beasley Performing Arts Coliseum	1973	12,058
4	2	1982	W 1st-2d	"	"		"
4	2	1984	W 1st-2d	"	"		"
2	1	1949	CH-N3d	Seattle	Edmundson Pavilion	1927	9,000
4	2	1952	Final Four	"	"		"
1	1	1953	W-2 1st	"	"		"
1	1	1956	FW 1st	"	"		"
4	2	1960	W Rgnl	"	"		"
4	2	1970	W Rgnl	"	"		"
3	2	1984	Final Four	"	#Kingdome	1976	38,471
3	2	1987	W Rgnl	"	"		"
3	2	1988	W Rgnl	"	"		"
3	2	1989	Final Four	"	"		"
3	2	1991	W Rgnl	"	"		"
3	2	1993	W Rgnl	"	"		"
3	2	1995	Final Four	"	"		"
6	3	1999	W 1st-2d	"	#KeyArena at Seattle Center	1995	38,540
6	3	2004	1st-2d	"	"		14,643
6	3	2004	1st-2d	"	"		16,564
6	3	2003	1st-2d	Spokane	#Spokane Memorial Arena	1995	11,757
6	3	2007	1st-2d	"	"		11,551
6	3	2010	1st-2d	"	"		12,210
WEST VIRGINIA							
1	1	1971	E 1st	Morgantown	WVU Coliseum	1970	14,000
4	2	1972	E Rgnl	"	"		"
1	1	1974	E 1st	"	"		"
WISCONSIN							
4	2	1941	En Rgnl	Madison	Wisconsin Field House	1927	14,000
4	2	1969	ME Rgnl	"	"		13,000
3	2	2002	MW Rgnl	"	Kohl Center	1998	15,995
4	2	1984	ME 1st-2d	Milwaukee	#Milwaukee Exposition & Conv. Center	1950	11,052
6	3	1992	MW 1st-2d	"	#Bradley Center	1988	18,600
6	3	1996	MW 1st-2d	"	"		"
6	3	1999	MW 1st-2d	"	"		"
6	3	2004	1st-2d	"	"		18,866
6	3	2010	1st-2d	"	"		19,000

(now named BMO Harris Bradley Center)

G—Number of games.
 S—Number of sessions.
 CH—National championship game.
 N3d—National third-place game.
 Rgnl—Regional.
 3d—Third round.
 2d—Second round.
 1st—First round.
 OR—Opening round.
 East—East region.
 En—Eastern region.
 E-1—East-1 region.

E-2—East-2 region.
 FW—Far West region.
 ME—Midwest region.
 MW—Midwest region.
 S—South region.
 SE—Southeast region.
 W—West region.
 Wn—Western region.
 W-1—West-1 region
 W-2—West-2 region
 TH—Tripleheader.
 #Non-campus arena.

Future Dates and Sites

Tournament

Year	First Round	Second Round	Third Round	Regionals	Final Four
2013	March 19-20	March 21-22	March 23-24	March 28-31	April 6 and 8
2014	March 18-19	March 20-21	March 22-23	March 27-30	April 5 and 7
2015	March 17-18	March 19-20	March 21-22	March 26-29	April 4 and 6
2016	March 15-16	March 17-18	March 19-20	March 24-27	April 2 and 4
2017	March 14-15	March 16-17	March 18-19	March 23-26	April 1 and 3
2018	March 13-14	March 15-16	March 17-18	March 22-25	March 31 and April 2

Final Four

Year	Dates	Site & Hosts
2013	April 6 and 8	Georgia Dome, Atlanta Host: Georgia Institute of Technology
2014	April 5 and 7	Cowboys Stadium, Arlington, TX Host: Big 12 Conference
2015	April 4 and 6	Lucas Oil Stadium, Indianapolis Hosts: Horizon League, Butler University and Indiana University-Purdue University at Indianapolis
2016	April 2 and 4	Reliant Stadium, Houston Hosts: University of Houston and Rice University

Early Rounds

2013

FIRST ROUND

MARCH 19 AND 20

- University of Dayton Arena, Dayton, OH
Host: University of Dayton

SECOND AND THIRD ROUNDS

MARCH 21 AND 23

- Palace of Auburn Hills, Auburn Hills, MI
Host: Oakland University
- Rupp Arena, Lexington, KY
Host: University of Kentucky
- EnergySolutions Arena, Salt Lake City
Host: University of Utah
- HP Pavilion, San Jose, CA
Host: West Coast Conference

MARCH 22 AND 24

- Frank Erwin Center, Austin, TX
Host: University of Texas at Austin
- University of Dayton Arena, Dayton, OH
Host: University of Dayton
- Sprint Center, Kansas City, MO
Host: Missouri Valley Conference
- Wells Fargo Center, Philadelphia
Host: Temple University

REGIONALS

MARCH 28 AND 30

- WEST — Staples Center, Los Angeles
Host: Pepperdine University
- EAST — Verizon Center, Washington, D.C.
Host: Georgetown University

MARCH 29 AND 31

- SOUTH — Cowboys Stadium, Arlington, TX
Host: Big 12 Conference
- MIDWEST — Lucas Oil Stadium, Indianapolis
Hosts: Indiana University-Purdue University at Indianapolis and Horizon League

2014

FIRST ROUND

MARCH 18 AND 19

- University of Dayton Arena, Dayton, OH
Host: University of Dayton

SECOND AND THIRD ROUNDS

MARCH 20 AND 22

- First Niagara Center, Buffalo, NY
Host: Metro Atlantic Athletic Conference
- BMO Harris Bradley Center, Milwaukee
Host: Marquette University
- Amway Center, Orlando, FL
Host: Stetson University
- Veterans Memorial Coliseum, Spokane, WA
Host: Washington State University

MARCH 21 AND 23

- PNC Arena, Raleigh, NC
Host: North Carolina State University
- AT&T Center, San Antonio
Host: University of Texas-San Antonio
- Viejas Arena, San Diego
Host: San Diego State University
- Scottrade Center, St. Louis
Host: Missouri Valley Conference

REGIONALS

MARCH 27 AND 29

- WEST — Honda Center, Anaheim, CA
Host: Big West Conference
- SOUTH — FedEx Forum, Memphis, TN
Host: University of Memphis

MARCH 28 AND 30

- MIDWEST — Lucas Oil Stadium, Indianapolis
Host: Horizon League
- EAST — Madison Square Garden, New York
Hosts: St. John's University/Big East Conference

2015**FIRST ROUND****MARCH 17 AND 18**

- University of Dayton Arena, Dayton, OH
Host: University of Dayton

SECOND AND THIRD ROUNDS**MARCH 19 AND 21**

- Veterans Memorial Arena, Jacksonville, FL
Host: Jacksonville University
- KFC Yum! Center, Louisville, KY
Host: University of Louisville
- Consol Energy Center, Pittsburgh
Host: Duquesne University
- Rose Garden, Portland, OR
Host: University of Oregon

MARCH 20 AND 22

- Time Warner Cable Arena, Charlotte, NC
Host: University of North Carolina-Charlotte
- Nationwide Arena, Columbus, OH
Host: The Ohio State University
- CenturyLink Center, Omaha, NE
Host: Creighton University
- Key Arena, Seattle
Host: University of Washington

REGIONALS**MARCH 26 AND 28**

- MIDWEST — Quicken Loans Arena, Cleveland
Host: Mid-American Conference
- WEST — Staples Center, Los Angeles
Host: Pepperdine University

MARCH 27 AND 29

- SOUTH — Reliant Stadium, Houston
Host: Rice University/University of Houston
- EAST — Carrier Dome, Syracuse, NY
Host: Syracuse University

Tournament Moments ...

April 4, 1983, championship game in The Pit in Albuquerque, New Mexico – Tied with Houston's famed Phi Slamma Jamma at 52, underdog North Carolina State held the ball for the last shot, but managed only a desperate Dereck Whittenburg fling from 30 feet with time running out. Wolfpack forward Lorenzo Charles saw that the shot was short and leaped, grabbed it in midair and jammed it home just before the sound of the buzzer, which left coach Jim Valvano looking for someone to hug.



Photo from North Carolina State sports information

Tournament Moments ...

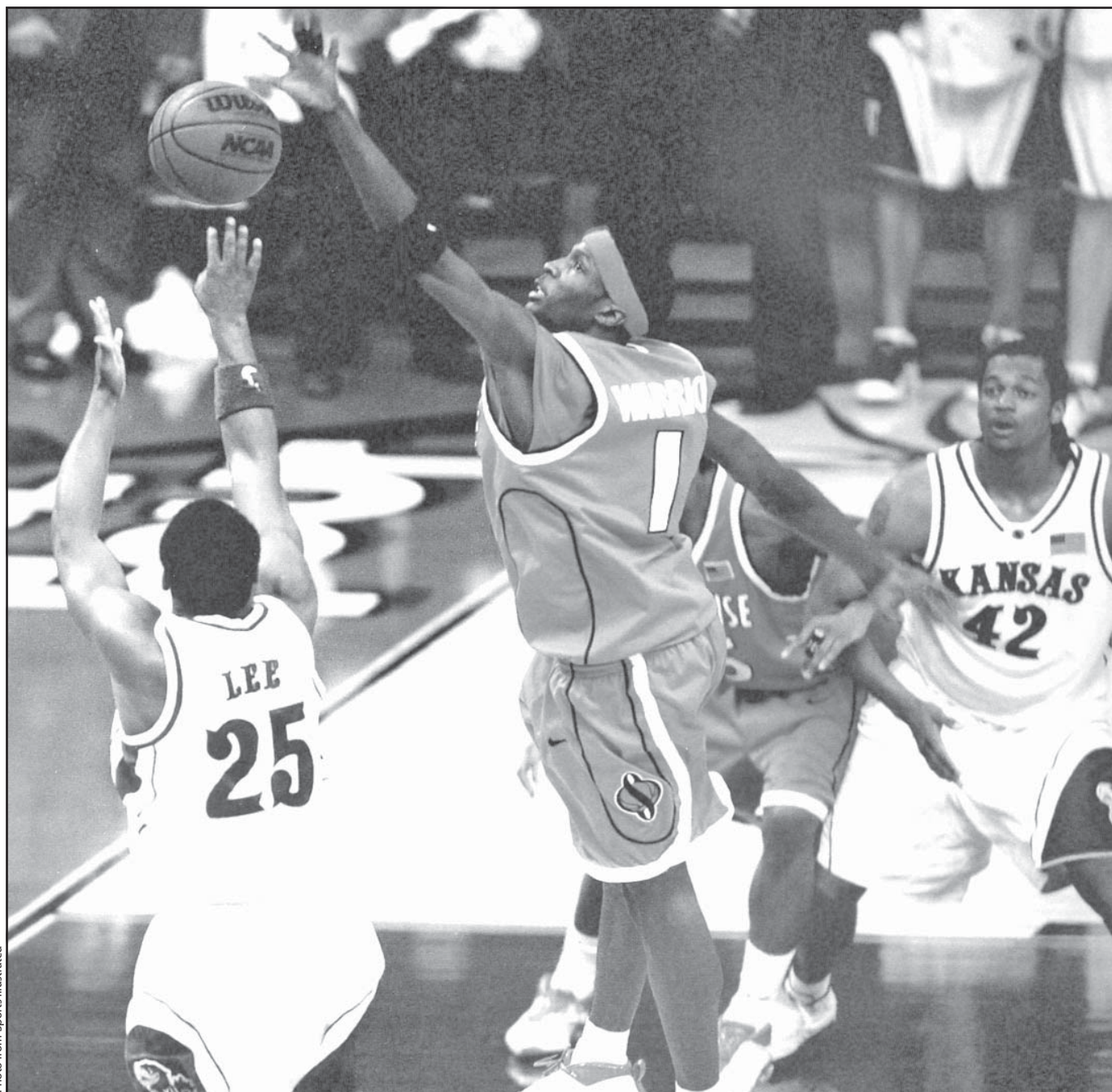


Photo from Sports Illustrated

April 7, 2003, championship game in the Louisiana Superdome in New Orleans – Down by three and with only two seconds left on the game clock, Michael Lee of Kansas let fly the possible game-tying trey from the corner. However, Syracuse's Hakim Warrick seemed to appear out of nowhere to swat the ball harmlessly out of bounds, preserve the 81-78 victory and give the Orange its first national championship.